

Briton ■ LCN ■ **LEGGE** ■ **SCHLAGE** ■ VON DUPRIN

Commercial Guide



ALLEGION™

PIONEERING SAFETY™



Commercial Guide

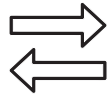
RETHINK SPECS

Allegion's Overtur™ is a cloud-based suite of tools that enables architects and door hardware consultants to come together and collaborate on the specifications and security design of doors and openings.

Overtur provides a variety of apps to accomplish such tasks as:



Review designs
in a real-time
online environment



Transfer door data
– including electrical
requirements



Upload door data,
schedule and plans
directly from BIM



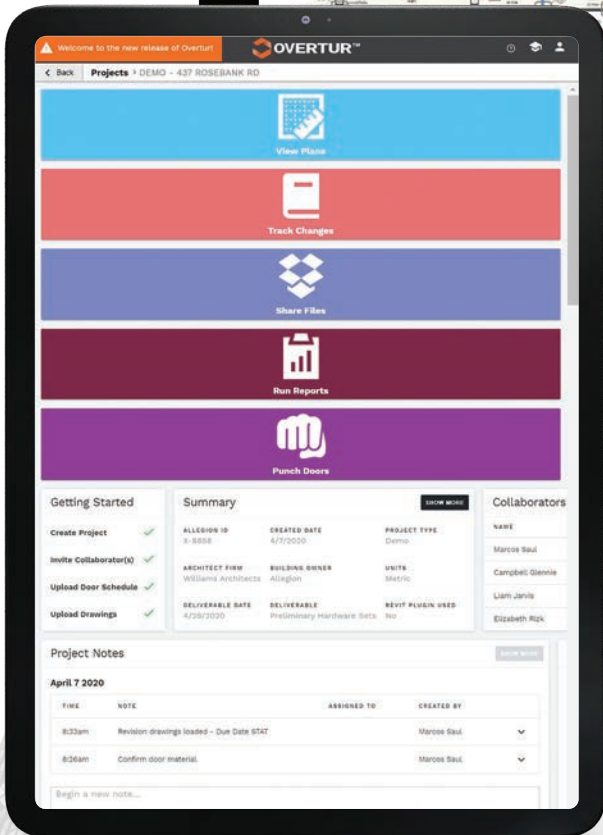
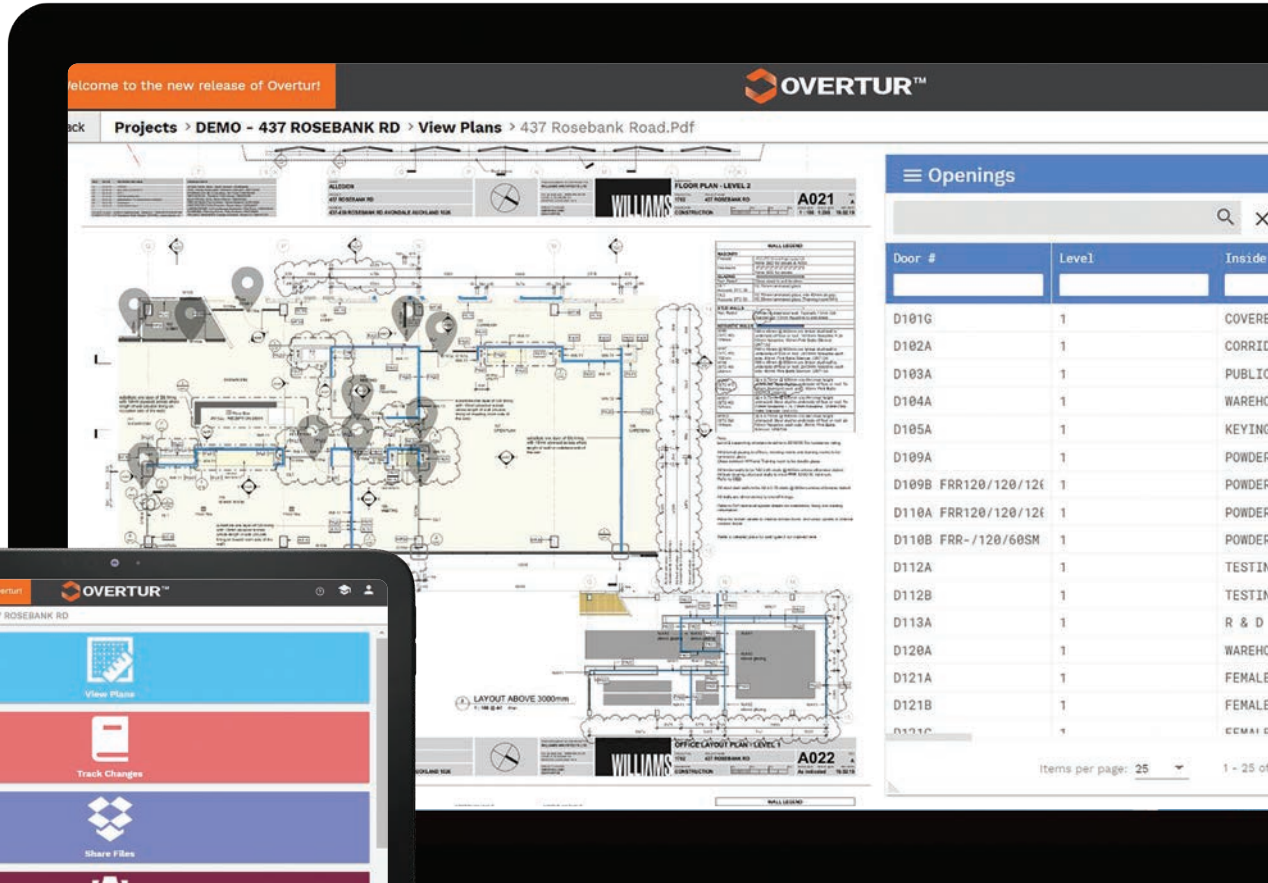
Graphically track
and review changes

Improved collaboration, coordination and productivity. Overtur is designed to simplify the process of specifying door hardware for your next project.

To learn more, visit allegion.co.nz/overtur



OVERTUR™



ALLEGION™

Introduction

With the ever-increasing technical complexity of building, fire, and disability code compliance, it is more important than ever to specify the appropriate products for security and life-safety.

Allegion creates value by securing people and assets with seamless access wherever they reside, work, and thrive. Let our team of technically trained consultants assist you with product specification and door hardware scheduling to ensure appropriate compliance codes are met.

We have sales offices located in Auckland, Wellington, and Christchurch. We would be happy to discuss any project requirements you may have.

Total solutions

Independently or as an integrated total solution, we can tailor any door hardware schedule to suit your individual security and safety needs for business or home.

Briton – Digital locks, door closers, emergency exit devices, fire door controls, floor springs, pivot sets, transom closers

FSH – Electric strikes, electromagnetic locks and hold open devices, electric drop bolts, electronic cabinet locks

Eco Schulte – Auto swing door operators

Ives and Glynn-Johnson – Door coordinators, general hardware, pivot sets, overhead stops and holders

LCN – Mechanical and electronic door closers, fire door controls

Legge – Door furniture, locks and latches, general hardware, hinges

Schlage – Electronic locks, door furniture, entrance handles, general hardware, keying systems, locks and latches, access control readers, and credentials

Von Duprin – Emergency exit devices, electronic door control products, electric strikes, exit devices, and power supplies

Contents

4	Introduction	37	Door controls
7	Architectural hardware consulting services	38	LCN 4031, 4031T, 1461, 1461T Series
8	Commercial security solutions	39	LCN 4040XP, 4040XPT Series
11	Electronic locks	40	ECO Shulte ETS Series swing door operator
12	Schlage Omnia Fire Rated Smart Lock	41	Briton surface and concealed cam action closers
13	Schlage eGO Smart Hotel Lock	42	Briton 1120, 1120T, 1130, 1130T door closers
14	Schlage Breeze accessories	43	Briton 5000, 7500 floor springs
15	Schlage CO Series	43	Briton 2800 concealed transom closers
16	FSH FEL 990 Series electric mortice lock	44	Briton 2800, 7500 pivot sets
16	FSH MEM2400LP mechanical electromagnetic lock	44	Ives flush bolts
17	FSH FEM3500 Series electromagnetic lock	45	Ives COR32 and COR7G door coordinators
17	FSH VE1260 motorised drop bolt	45	Briton door selectors
19	Pull handles	47	Exit devices
23	Door furniture	48	Briton 370 Series panic latch and panic bolt
24	Legge 5300, 5400, 700, 500 Series	49	Von Duprin 22 Series
24	Legge 8000, 6000, 67 Series	50	Von Duprin 33A, 88 Series
25	Legge levers	51	Von Duprin 99 Series
26	Legge plate functions	53	General hardware
26	Legge 8000 Series escutcheons	54	Schlage door stops
27	Legge 6000, 67 Series escutcheons	54	Legge latchbacks
28	Legge 800 Series	55	Legge pull handles and push plates
28	Legge G2 Series locksets	55	Legge flush pulls
29	Schlage B250 Series deadbolt	56	Legge heavy duty roller catch
29	Legge G2 Series deadbolt	56	Schlage signage and coat hook
31	Locks	56	Legge indicator bolt
32	Legge 990MF mortice locks	57	Legge grabrails
33	Legge 995MF narrow stile mortice locks	57	Legge architectural hinges
33	Legge 951 short backset locks	57	Schlage door viewer
34	Schlage SR keying	58	Legge bolts - barrel, chain, and flush
35	Schlage master keying	60	Glossary and guides
		61	Finish swatches and services



Leading the pack, keeping it local

It is imperative for homes and businesses to have contemporary, quality security hardware solutions. At Allegion, we take our leadership in the industry seriously and pride ourselves on being a local manufacturer, continually developing contemporary products to meet the needs of New Zealanders.

To further set us apart in the market, we offer an extensive selection of special finishes to complement architectural designs with a fully automated, leading edge electroplating plant.

With Allegion, you can be assured your door hardware specification combines innovation with style from start to finish.

www.allegion.co.nz

NZ
Designed &
Assembled


ALLEGION™

Allegion products are not only designed to complete your architectural vision, but also to suit the operational and security needs of a facility for seamless access.

We offer an extensive range of mechanical and electronic hardware and our experienced team can help you specify the right products to meet all your operational building requirements.

When you partner with Allegion, you receive:

- **Easy collaboration with Overtur**
Our cloud-based ecosystem allows project team members to collaborate on specifications, design, and construction of door security and openings.
- **Market leading warranties**
We offer some of the best mechanical warranties in the market, and our 10-year mechanical warranty period is extended to 15 years for Matrix+ partners.
- **Accurate and detailed specifications**
Our specification team are experts in their field. Fully qualified and with over 50 years' of combined experience, we guarantee accuracy.
- **Experts across the regions**
With consultants across the country, you have one point of contact for all your interactions with Allegion.
- **NZ made innovative products**
Our local manufacturing and engineering capability are fit for purpose and gives the flexibility of late configuration.

How we can help

- Hardware specifications
- Door-by-door schedules
- Product elevations
- Substitution request reviews
- Hardware submittals reviews
- Comprehensive product training
- Building, life-safety, and accessibility codes compliance
- Job site reviews and pre and post installation inspections

Getting started

Contact us and we'll connect you with an Allegion consultant in your area.

To get started, please share with us a copy of the following:

- Architectural floor plans
- Door and frame elevations
- Door schedule/details
- Any known requirements



Allegion serves the access and security needs of various projects, including commercial real estate, aged care facilities, hospitality, apartments, tertiary institutions, schools, government, and healthcare. We understand the practical and regulatory requirements for each market and have an experienced team to assist you in specifying compliant and functional door hardware solutions.



Aged Care

Aged care facilities have unique requirements that differ across each project and application. Accessibility is a key consideration, including visual disabilities where the colour of the door and the door lever must have visual contrast as per the building code. To enhance user functionality, cam action door closers help users by reducing the force required to open the door. Style is also important for these projects, and our range of special finishes provides options to enhance visual aesthetics of a project.



Commercial / Retail

Products specified for commercial buildings need to be robust and suitable for heavy use. We can specify both interior and exterior products in marine grade stainless steel. Style is another key consideration and we have a range of durable products available in special finishes to suit your design needs. Security and electronic access options are also available. We understand the accessibility and fire code compliance requirements and can create schedules specifically for your project needs.



Hospitality

Style is a key consideration in hospitality projects that also have fire and accessibility compliance requirements. Allegion has products to meet both needs with our range of levers with the required accessibility design in 7 different special finishes. Necessary unique access control requirements are met by our digital lock solutions, such as Schlage eGO or Schlage Omnia.





Apartments

Apartment buildings have requirements that vary depending on the intended customers and use. Some situations may or may not require accessible door hardware, however our team of experts will ensure you get a compliant specification to suit your project. We have a range of electronic entry solutions that will allow you to differentiate your offering to potential buyers. The Schlage Omnia, for example, is a fire rated smart lock perfect for use in apartment buildings. Special finishes are also an opportunity to upgrade your project and provide a unique selling point to customers.



Education

Primary, secondary, and tertiary institutions have very different access and security requirements. The users of these building types are diverse, varying from small children to adults and those with and without accessibility requirements. For example, master keying is a service we provide for many primary or secondary construction projects, whereas tertiary institutions often require full electronic access solutions. Allegion assists with specification and scheduling to ensure accessibility, fire, and emergency evacuation compliance regulations are met.



Healthcare

The physical environment of a healthcare facility is the foundation of all that occurs in it. We believe optimising a healthcare facility's physical environment can have a direct link to improved patient health and safety. It also ensures physician and staff safety, security and performance; increasing operational efficiencies and financial outcomes.

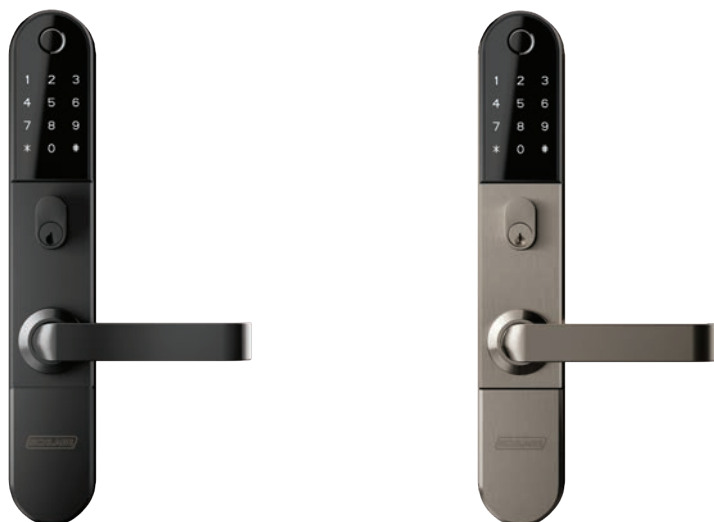






Electronic Locks

Schlage Omnia Fire Rated Smart Lock



● Black ● Satin Nickel Plate



Fire rated



Accessible



Remote access
with Schlage Wi-Fi Bridge BZ100



Works with Schlage Breeze™ app



Virtual keys



Built-in alarm



Access with PIN, key tag or
fingerprint



Key override



Auto re-locking

Technical specifications

- Easily programmable with the Schlage Breeze App
- Use voice commands via Google Assistant and Amazon Alexa
- Touch screen keypad - up to 150 custom or scheduled pin codes
- Fingerprint scanner
- 1 year battery life (approximately 10 uses per day)
- Refer to page 14 for Schlage Breeze accessories

Dimensions

- External - 313mm (L) x 53mm (W) x 28mm (D)
- Internal - 310mm (L) x 53mm (W) x 3mm (D)

Certifications

- Fire rated: Product has been tested for use in fire doors. Refer to fire door manufacturer for approval.
- Accessibility: Compliant to the AS 1428:1-2009 Design for Access and Mobility

Warranty

- 2 year mechanical and electronic
- For finish warranties, please refer to allegion.co.nz/finisheswarranty

Schlage eGO Smart Hotel Lock



● Silver - Anodised Aluminium



Fire rated



PMS integration solution



Programming with Schlage Breeze™ Hotel



Access with PIN, key tag or fingerprint



Mobile access with Schlage Breeze™ Guest



Remote access with Schlage Wi-Fi Bridge BZ100

Technical specifications

- Operated with the Schlage Breeze Hotel app to manage virtual check-in or remote access
- Programmable cards or app-based access for fixed periods of time or days of the week
- App integration with existing PMS software via SDK/API
- Refer to page 14 for Schlage Breeze accessories

Battery

- 20,000 cycles (depending on operating conditions)

Certifications

- Fire rated: Product has been tested for use in fire doors. Refer to fire door manufacturer for approval.
- Accessibility: Compliant to the AS 1428:1-2009 Design for Access and Mobility

Warranty

- 2 year mechanical and electronic
- For finish warranties, please refer to allegion.co.nz/finisheswarranty

Schlage Breeze accessories



Schlage Wi-Fi Bridge
(BZ100)



Schlage Encoder
(BZ200)

Technical specifications

- Network: Wi-Fi 2.4GHz
- IEEE standard: 802.11 b/g/n
- Power interface: Type-C USB
- Power input: 5V/500mA

Wi Fi Bridge (BZ100)

- 70mm (L) x 70mm (W) x 20mm (D)

Encoder (BZ200)

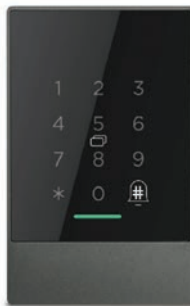
- 70mm (L) x 70mm (W) x 26mm (D)
- Compatible with the Schlage Breeze Hotel system

Lock Compatibility

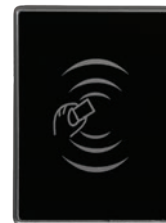
- Schlage Omnia™ Smart Lock
- Schlage eGO™ Smart Hotel Lock

Warranty

- 1 year electronic



Schlage Keypad Controller
(BZ300)



Schlage Lift Controller
(BZ400)

Technical specifications

Keypad Controller (BZ300)

- 125mm (L) x 79mm (W) x 15mm (D)
- Aluminium frame/tempered glass
- Bluetooth 4.1
- DC12V power supply
- 15mA standby current
- ≈1A operating current
- ≈1.5S unlocking time
- IP66 water level
- MIFARE M1 S50 card type
- App and IC card unlocking

Lift Controller (BZ400)

- Bluetooth 4.1
- Compatible with iOS7.0 or later / Android 4.3 smartphone or later
- 9-16V DC power supply
- 10 mA standby current, <400 mA working current
- MIFARE M1 S50 card type
- App and IC card unlocking

Lock Compatibility

- Schlage Omnia™ Smart Lock
- Schlage eGO™ Smart Hotel Lock

Warranty

- 1 year electronic

Schlage CO Series



CO 100



CO 200

 Satin Chrome Plate



Fire rated



Access with PIN
or key tag

Technical specifications

- Available in cylindrical or mortice lock with 70mm backset as standard

CO100

- Manually programmable
- Up to 500 users
- 3-6 digit PIN codes
- User rights stored on lock
- Up to 2 years battery life

CO200

- Computer programmable with audit trail*
- Up to 2000 users and 2000 audit trails
- Up to 32 holidays and 16 time zones
- Operates with a keypad and proximity card

Certification

- Fire rated: Product has been tested for use in fire doors. Refer to fire door manufacturer

Warranty

- 1 year electronic
- 10 year mechanical
- For finish warranties, please refer to allegion.co.nz/finisheswarranty/

*Requires Handheld Device (HHD), sold separately

FSH FEL990 Series electric mortice lock



Technical specifications

- Vestibule and Combination lock
- Handing (left or right)
- Fail safe/secure adjustable on site

Door

- Metal or wood
- 32mm to 50mm thick (extended spindle for up to 65mm thickness available)

Backset

- 60mm standard
- 70mm
- 89mm
- 127mm

Models

- FEL990**
- Non-monitored

- FEL990M**
- Monitored

Monitoring

Monitored

- Door monitoring by reed switch
- Lock status monitoring by combination of locking bar, deadlatching lock, and locking parameters
- Dual key override monitoring (KOM)
- Request to exit (REX) via hub/handle(s)
- LED indication

Warranty

- 10 years mechanical
- 1 year electronic
- For finish warranties, please refer to allegion.co.nz/finisheswarranty

FSH MEM2400LP mechanical electromagnetic lock



Technical specifications

- Low power consumption
- Up to 1000kg holding force
- 12V/24V DC field selectable
- Full monitoring lock status sensor
- Door status sensor and warning alarm
- Light panel

Accessories

- Adjustable L bracket
- Mounting plate extension 15mm

Warranty

- 5 years mechanical
- 1 year electronic

FSH FEM3500 Series electromagnetic lock



Fire rated

Technical specifications

- Surface mount standard
- 280kg holding force
- 12V/24V DC field selectable
- Built-in varistor (MOV) surge protection
- CE/C-Tick
- No residual magnetism

Models

- FEM3500D**
- Double non-monitored
- FEM3500DM**
- Double monitored
- FEM3500**
- Single non-monitored
- FEM3500M**
- Single monitored
- FEM3500FM**
- Single flush mount

Accessories

- L and Z brackets for double FEM3500D and FEM3500DM universal
- L and Z brackets for single FEM3500 and FEM3500M universal
- FEM3500 bolt kit for 50mm thick doors

Warranty

- 5 years mechanical
- 1 year electronic

FSH VE1260 motorised drop bolt



Technical specifications

- High torque motor driven drop bolt with up to 35kg pre-load/side-load tolerance
- Up to 1000kg holding force
- Consumes an in-rush current of 290mA at 12V DC during locking/unlocking, 15mA at 12V DC while locked/unlocked
- 1A power supply required for full pre-load capability
- Round and square end models

Accessories

- Surface mount boxes
- 40mm strike plate to cater for +/- 12mm door misalignment with 45mm minimum door thickness, square end

Warranty

- 5 years mechanical
- 1 year electronic





Pull handles



The Schlage range of pull handles has been designed for residential and commercial applications. This comprises interior and exterior doors for use in retail, educational, institutional, governmental, medical, and public buildings, as well as residential homes.

The range includes both round and square tubular designs. Entrance handles can be fixed to timber, aluminium, and glass doors. They are designed with high quality 316 Marine Grade Stainless Steel to provide greater durability and minimise maintenance.

Schlage pull handles



Andor

Fixing Centres (mm) 300/400/600/800
 Lengths (mm) 325/425/625/825
 Dimension (mm) 25 x 25



Trento

600/800/1000
 620/820/1020
 40 x 20



Deigo

300/450/600/800/1000
 325/475/625/825/1025
 25 x 25



Turin

Fixing Centres (mm) 450/600
 Lengths (mm) 600/800
 Dimension (mm) 25 x 25



Corfu

250/400/600/800/1000
 450/600/800/1000/1200
 Ø32



Verona*

300/450/600/800/1000
 380/530/680/880/1080
 Ø32

● Polished Stainless Steel (on special request) ● Satin Black Chrome ● Satin Stainless Steel

*Verona available in Satin Stainless Steel only

Technical specifications

- 316 Marine grade stainless steel
- Supplied for back-to-back fixing
- Other designs and sizes available on indent, price, and lead time for application
- Sold in pairs

Door type

- Timber, glass, or metal

Door thickness

- Timber or aluminium 32mm-70mm
- Timber or aluminium 32mm-55mm (Verona)
- Glass 10mm-15mm

Warranty

- 10 year mechanical
- For finish warranties, please refer to allegion.co.nz/finisheswarranty





Door furniture

Legge plates

(Shown with an Alpha lever)



5300 Series



5400 Series



700 Series



500 Series

Technical specifications

Plate dimensions

- 5300 Series: 185mm (L) x 25mm (W) x 12mm (D)
- 5400 Series: 185mm (L) x 25mm (W) x 12mm (D)
- 700 Series: 168mm (L) x 48mm (W) x 11mm (D)
- 500 Series: 168mm (L) x 48mm (W) x 11mm (D)

Door thickness

- 32mm - 55mm
- 56mm - 75mm (use extended screws)

Material

- Forged brass
- Extruded brass plates
- 5300 and 700 Series are also available in 316 marine grade stainless steel

Accessories

Locks / Latches

- Legge 995MF mortice locks
- Legge 990MF mortice lock (on request)

Others

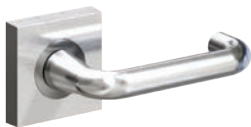
- Extended screws

Warranty

- 30 year mechanical
- For finish warranties, please refer to allegion.co.nz/finisheswarranty

Legge roses

(Shown with an Alpha lever)



8000 Series



6000 Series



67 Series

Technical specifications

Rose dimensions

- 6000 Series: Ø55mm x 12mm (D)
- 8000 Series: 57mm (L) x 57mm (W) x 12mm (D)
- 67 Series: Ø63mm x 11mm (D)

Door thickness

- 32mm-55mm passage
- 32mm-42mm privacy
- 56mm-75mm privacy (8000 Series)

Material

- Forged brass

Backset

- 60mm standard on passage and privacy latch
- Suitable to use latch furniture with mortice locks and escutcheons

Accessories

Locks / Latches

- Schlage 60mm latchbolt
- Legge 990MF mortice lock
- FSH FEL990 electric mortice lock

Others

- Escutcheons
- Extended screws

Warranty

- 30 year mechanical
- For finish warranties, please refer to allegion.co.nz/finisheswarranty

Legge levers



Alpha (29) 



Angelo (57)



Bergen (B) 



Cisa (59)



Ergo (62) 



Leonardo (12)



Monet (50)



Neptune (N)









Omega
(500 and 700 Series only)



Renoir (52)



Rubens (56)

-  Antique Bronze
-  Chrome Plate
-  Oil Rubbed Bronze
-  Polished Brass*
-  Satin Black Chrome
-  Satin Brass*
-  Satin Chrome Plate

*Brass variants can be lacquered or unlacquered on request

Legge plate functions

(Shown on Legge 700 Series plate)



Turn



Indicating turn



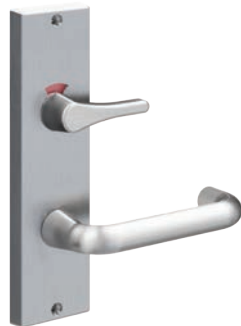
Emergency release



Emergency release with indication



Accessible turn



Accessible turn with indication

Legge 8000 Series escutcheons



Oval cylinder hole
#8008



Euro cylinder hole
#8012



Emergency release
#8009



Indicating emergency release
#8014



Turn
#8007



Indicating turn
#8014



Accessible turn LH/RH
#8054



Accessible indicating turn
#8054IND



Antique Bronze
 Chrome Plate
 Oil Rubbed Bronze
 Polished Brass
 Satin Black Chrome
 Satin Brass
 Satin Chrome Plate

Technical specifications

- Ø50mm x D9mm
- Concealed fixing
- Brass

Warranty

- 10 year mechanical
- For finish warranties, please refer to allegion.co.nz/finisheswarranty



Accessible



Denotes handing

Legge 6000 Series escutcheons



Oval cylinder hole
#6008



Euro profile cylinder hole
#6012



Emergency release
#6009



Indicating emergency release
#6014



Turn
#6007



Oval cylinder hole
#6008



Accessible turn LH/RH
#6054



Accessible indicating turn
LH/RH
#6054IND



Antique Bronze
 Chrome Plate
 Oil Rubbed Bronze
 Polished Brass
 Satin Black Chrome
 Satin Brass
 Satin Chrome Plate

Technical specifications

- Ø50mm x D9mm
- Concealed fixing
- Brass

Warranty

- 10 year mechanical
- For finish warranties, please refer to allegion.co.nz/finisheswarranty

Legge 67 Series escutcheons



Oval cylinder hole
#22



Turn snib
#23



Emergency release
#24

Antique Bronze
 Chrome Plate
 Oil Rubbed Bronze
 Polished Brass
 Satin Black Chrome
 Satin Brass
 Satin Chrome Plate

Technical specifications

- Ø50mm x D9mm
- Forged brass

Warranty

- 10 year mechanical
- For finish warranties, please refer to allegion.co.nz/finisheswarranty

Legge 800 Series



Alpha (A)



Bergen (B)

● Satin Chrome Plate



Technical specifications

Plate dimensions

- 128mm (L) x 128mm (W) x 64mm (D)

Material

- Forged brass levers and plates

Fixing

- Back to back
- Concealed fixing on external plates

Door thickness

- 32mm - 50mm

Accessories

Locks/latches

- Legge 990MF mortice lock

Other

- Extended screws

Warranty

- 30 year mechanical
- For finishes warranties, please refer to allegion.co.nz/finisheswarranty

Legge G2 Series locksets



Orbit



Neptune (N)



Fire rated

● Satin Chrome Plate

Technical specifications

- ANSI grade 2 performance
- Vandgard® Option

Rose specifications

- Orbit - 70mm
- Neptune - 75mm
- Concealed fixing

Backset

- 70mm standard
- 60mm and 127mm available
- Concealed fixing on external plates

Door thickness

- 32mm - 50mm
- 45mm - 60mm available (Neptune)

Keyway

- Schlage C4 6-pin keyway profile

Functions

Orbit

- Entrance lock

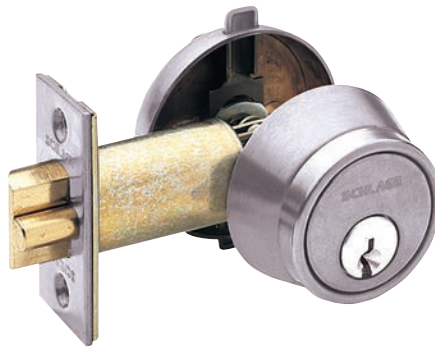
Neptune

- Entrance lock
- Passage latch
- Privacy latch
- Claasroom latch
- Storeroom lock
- Dummy trim
- Double cylinder lock
- Vanguard entrance

Warranty

- 10 year mechanical
- For finishes warranties, please refer to allegion.co.nz/finisheswarranty

Schlage B250 Series deadbolt



● Satin Chrome Plate

Technical specifications

Door type

- Timber or metal

Backset

- 70mm, 60mm available

Door thickness

- 35mm-44mm

Keyway

- Schlage C4 6-pin keyway standard
- Schlage E6 pin keyway optional
- Schlage Everest D keyway optional

Models

- B250PD Nightlatch
- B252PD Double cylinder deadlatch

Materials

- Chassis: steel, brass, and die cast components
- Outer forend: steel
- Strike plate: steel
- Latch: brass with 14mm throw

Warranty

- 10 year mechanical
- For finishes warranties, please refer to allegion.co.nz/finisheswarranty

Legge G2 Series deadbolt



(Single cylinder shown)

● Satin Chrome Plate

Technical specifications

- ANSI/BHMA grade 2 performance

Rose specifications

- Ø65mm

Backset

- 60mm or 70mm adjustable

Door thickness

- 32mm - 50mm

Keyway

- Schlage C4 6-pin keyway standard
- Schlage SRW keyway optional

Functions

- Double cylinder (key/key)
- Single cylinder (key/turn)

Warranty

- 10 year mechanical
- For finishes warranties, please refer to allegion.co.nz/finisheswarranty





Locks

Legge 990MF mortice locks



Combination / Vestibule
(C and V Series)



Deadlock
(D Series)



Nightlatch
(N Series)



Sliding door
(S Series)



Fire rated

Antique Bronze
 Oil Rubbed Bronze
 Polished Brass
 Satin Brass
 Satin Black Chrome
 Satin Chrome Plate
 Satin Stainless Steel

Technical specifications

Backset
 - 60mm standard
 - 70, 89, 127mm also available

Door thickness
 - 32mm - 50mm standard

Door type
 - Timber
 - Metal

Materials
 - Stainless steel inner and outer
 - Forend and strike supplied as standard

Functions

C - Combination
 D - Deadlocking
 N - Nightlatch
 S - Sliding doors
 V - Vestibule

Accessories

- Rebate kit (C, D, N, and V series)
 - Long and short lipped strikes (V and C series)

Cylinder
 - Oval cylinder

Furniture
 - Legge 5300 & 5400 Series
 - Legge 6000 & 8000 Series M version
 - Legge 500 & 700 Series
 - Legge 800 Series
 - Legge 67 Series

Warranty

- 30 year mechanical
 - For finish warranties, please refer to allegion.co.nz/finisheswarranty

Legge 995MF narrow stile mortice locks



Combination / Vestibule

- Antique Bronze
- Chrome Plate
- Oil Rubbed Bronze
- Polished Brass
- Satin Black Chrome
- Satin Brass
- Satin Chrome Plate

Technical specifications	Functions	Accessories	Warranty
<p>Backset</p> <ul style="list-style-type: none"> - 23mm standard - 30mm and 38mm also available <p>Door thickness</p> <ul style="list-style-type: none"> - 32mm - 48mm standard - 51mm - 76mm also available <p>Door type</p> <ul style="list-style-type: none"> - Metal - Timber 	<p>C - Combination</p> <p>V - Vestibule</p>	<p>- Extended spindles</p> <p>- Metal or wood face plate</p> <p>- Long and short lipped strikes (V)</p> <p>Furniture</p> <ul style="list-style-type: none"> - Legge 5300/5400 Series 	<ul style="list-style-type: none"> - 30 year mechanical - For finish warranties, please refer to allegion.co.nz/finisheswarranty

Legge 951 short backset locks



951 door lock
23mm

951 door lock
30mm (timber forend shown)

951 strike
timber forend

951 strike
aluminium forend

- Aluminium
- Satin Stainless Steel

Technical specifications	Functions	Accessories	Warranty
<p>Backset</p> <ul style="list-style-type: none"> - 23mm (narrow stile) - 30mm <p>Door thickness</p> <ul style="list-style-type: none"> - 32mm - 55mm <p>Door type</p> <ul style="list-style-type: none"> - Metal - Timber 	<p>- Sliding or hinged</p>	<ul style="list-style-type: none"> - Single cylinder and turn - Double cylinder - Slam shut strike plate 	<ul style="list-style-type: none"> - 10 year mechanical - For finish warranties, please refer to allegion.co.nz/finisheswarranty

Schlage SR keying



Standard Oval Cylinder



PD Cylinder



Rim Cylinder



Round Mortice Cylinder



Euro Cylinder

- Antique Bronze
- Chrome Plate
- Oil Rubbed Bronze
- Polished Brass Unlacquered
- Satin Black Chrome
- Satin Brass Unlacquered
- Satin Chrome Plate

Technical specifications

- Drill resistant
- Keys cut to depths 0 to 10
- Housing standard shape and size

Materials

- Nickel silver keys

Warranty

- 10 year mechanical
- For finish warranties, please refer to allegion.co.nz/finisheswarranty

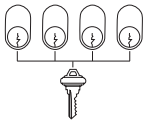
Schlage master keying

Most Schlage and Legge locks are supplied individually keyed. A well-designed keying system facilitates more control and increased security. Specially keyed systems have been developed to enable end users to assign access to individuals for locks they are authorised to operate. Lost ball construction keying is available.



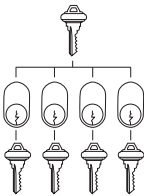
Keyed to Differ (KD)

All keys are individual and stand alone. Each lock can only be opened by its own individual key.



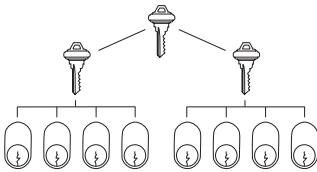
Keyed Alike (KA)

The system allows a number of locks to be operated by the same key as they are keyed to a specific code. This system is particularly suitable for residential applications with front and back doors.



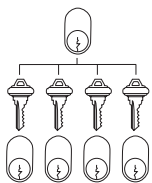
Master keyed

This keying system locks in a group to be keyed individually and does not allow those individual keys to operate any other lock in the system. However all locks in the system can be operated by one master key.



Grand master key

With this system, locks in several groups are independently keyed with a master key for each group. Each group is independent of each other, and the grand master key will work with all locks in all groups.



Maison keying

A maison key system is a keying system that allows a lock to be opened with a number of unique individual keys. Typically found in applications like apartment buildings, it provides unrestricted access to common doors. Unlike master keyed systems, the lack of security makes this a less attractive option.





Door controls

LCN 4031 & 4031T Series



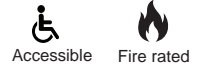
4031 Series door closer
(Hold open arm shown)



4031T Series door closer

● Aluminium

● Dark Bronze



Technical specifications

- Universal, fully reversible, non handed door closer
- Independent adjustable valves for backcheck, closing, and latching speeds
- Optional SRI primer for corrosive conditions
- High strength cast iron construction

Door type
- Timber or metal

Functions
- Regular (R)
- Hold open (HO), optional

Models

- 4031**
- Regular arm
 - Internal door size 660mm-1219mm
 - External door size 660mm-914mm
 - 1-4 adjustable closer strength
- 4031T**
- Track arm
 - Internal door size 660mm-965mm
 - 1-3 adjustable closer strength

Accessories

- Non handed metal cover
 - Non handed single lever arm
 - Drop plate
 - PA shoe
 - Hold open arm
 - Adaptor plate
- 4031T only**
- Standard track
 - Hold open clip

Warranty

- 30 year mechanical
- For finish warranties, please refer to allegion.co.nz/finisheswarranty

LCN 1461 & 1461T Series



1461 Series door closer



1461T Series door closer

● Aluminium

● Black

● Dark Bronze



Technical specifications

- Universal, fully reversible, non handed door closer
- Certified NSI/BHMA A 156.4-2019 American Standard for door controls-closers
- Tested to 2,000,000 cycles
- High-strength cast iron construction

Door type
- Interior, exterior
- Timber or metal

Functions
- Regular (R)
- Hold open (HO)
- Delayed action (DA)
- Cush-n-stop (CNS)
- Hold open cushion-stop (CNS-HO)

Models

- 1461**
- Regular arm
 - Internal door size 610mm-1524mm
 - External door size 610mm-1219mm
 - 1-6 adjustable closer strength
- 1461T**
- Track arm
 - Internal door size 660mm-965mm
 - 1-3 adjustable closer strength

Accessories

- Non handed metal cover
 - Hold open clip
 - Adaptor plate
 - Drop plate
 - PA shoe
- 1461 only**
- Blade stop spacer
- 1461T only**
- Track roller
 - Track bumper

Warranty

- 30 year mechanical
- For finish warranties, please refer to allegion.co.nz/finisheswarranty

LCN 4040XP & 4040XPT Series



4040XP Series door closer
(Hold open arm shown)



4040XPT Series door closer

● Aluminium

 Accessible  Fire rated

Technical specifications

- Universal, fully reversible, non handed door closers
- Independent adjustable valves for backcheck, closing and latching speeds
- High strength cast iron construction

Door type

- Timber or metal

Functions

- Regular (R)
- Hold open (HO)
- Cush-n-stop (CNS)
- Hold open cust-n-stop (CND-HO)

Model specifications

4040XP

- Internal 610mm-1524mm
- External 610mm-1219mm
- 1-6 adjustable closer strength

4040XPT

- Internal 610mm-1219mm
- External 762mm-914mm
- 1-4 adjustable closer strength

Accessories

- Adaptor plate
- Drop plate
- Hold open arm
- Cush-n-stop arm
- Hold open cush-n-stop arm
- Metal cover

4040XPT only

- Track roller
- Hold open clip

Warranty

- 30 year mechanical
- For finish warranties, please refer to allegion.co.nz/finisheswarranty

Note: LCN4041 delayed action model also available
Please speak to your Allegion consultant for more information

ECO Shulte ETS Series swing door operator



● Satin Stainless Steel

 Fire rated  EMC compliant

Technical specifications

- Approved as a hold-open device for fire and smoke protected doors
- Can be set for both low energy (only 4W on standby) and full power functions
- Push + Go feature allows the door to automatically open

Accessories

- Slide rail arm
- Standard arm
- Mounting plate
- Open stop
- Activation sensor
- Push plate actuator

Warranty

- 10 year mechanical
- 2 year electronic
- For finish warranties, please refer to allegion.co.nz/finisheswarranty

Briton surface cam action closers



2300 Series



2700 Series

- Black
- Electroplated Stainless Steel
- Silver



Fire rated

Technical specifications	Model	Functions	Warranty
Door type - Timber or metal Angle of opening - 80° - 80°-120° mechanical hold-open (optional)	2300 - 850mm-1100mm size - 40-80kg weight - Push/pull type - 2-4 adjustable strength	- Extruded aluminium body with cam action technology - High quality hydraulic fluid with built-in temperature compensation - Backcheck	- 10 year mechanical - For finish warranties, please refer to allegion.co.nz/finisheswarranty
	2700 - 850mm-1250mm size - 40-100kg weight - Push/pull type - 1-5 adjustable strength	- Extruded aluminium body with cam action technology - High quality hydraulic fluid with built-in temperature compensation - Backcheck	

Briton concealed cam action closer



2400 Series

- Black
- Electroplated Stainless Steel
- Silver

Technical specifications	Model	Functions	Warranty
Door type - Timber or metal Angle of opening - 80° - 80°-120° mechanical hold-open (optional)	2400 - 850-1100mm size - 40-80kg weight - Non handed type - 2-4 adjustable strength	- Compact concealed overhead closer - Extruded aluminium body with cam action technology - High quality hydraulic fluid with built-in temperature compensation - Aluminium side track	- 10 year mechanical - For finish warranties, please refer to allegion.co.nz/finisheswarranty

Briton door controls



1120



1120T



1130



1130T



Black



Satin Stainless Steel



Silver



Fire rated

Technical specifications

- Universal application fits standard, top jamb, and parallel arm installations
- Independent adjustable valves for backcheck, closing, and latching speeds
- Non-handed

Functions

- Regular (R)
- Hold open (HO)

Models

- 1120**
- Regular arm
 - 850mm-1100mm maximum door width
 - 45-80kg door weight
 - 2-4 adjustable closer strength

- 1120T**
- Track arm
 - 850mm-1100mm door width for parallel arm
 - 750mm-950mm for track arm
 - 40-80kg weight for parallel arm
 - 20-60kg for track arm
 - 1-3 adjustable closer strength

- 1130**
- Regular arm
 - 850mm-1400mm maximum door width
 - 40-120kg door weight
 - 2-6 adjustable closer strength

- 1130T**
- Track arm
 - 850mm-1250mm door width for parallel arm
 - 850mm-1100mm for track arm
 - 40-100kg weight for parallel arm
 - 40-80kg for track arm
 - 1-4 adjustable closer strength

Accessories

- Hold open arm
- Track arm
- Parallel arm bracket
- Adaptor plate
- Parallel arm drop plate

Warranty

- 10 year mechanical
- For finish warranties, please refer to allegion.co.nz/finisheswarranty

Briton floor springs



5000 Floor spring

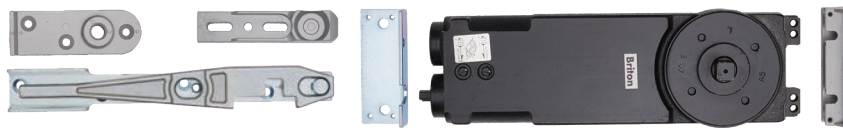


7500 Floor spring

● Satin Stainless Steel

Technical specifications	Model	Accessories	Warranty
<ul style="list-style-type: none"> - Tested to 500,000 cycles - Dual action floor spring with 3 installation adjustments - Closing and latching speed adjustments control the door during operation - Cast iron body <p>Functions</p> <ul style="list-style-type: none"> - Non hold open - Hold open 90° - Hold open 105° 	<p>5000</p> <ul style="list-style-type: none"> - 307mm (L) x 108mm (W) x 40mm (D) - 100kg door weight - 44mm minimum timber door thickness - 37mm minimum metal door thickness - 10mm-12mm glass door thickness with patch fittings - 1000mm maximum door leaf width (5003) - 1100mm maximum door leaf width (5004) - 3 fixed closer strength (5003) - 4 fixed closer strength (5004) <p>7500</p> <ul style="list-style-type: none"> - 341mm (L) x 78mm (W) x 60mm (D) - 300kg door weight - 40mm minimum timber door thickness - 37mm minimum metal door thickness - 750mm-1400mm maximum door leaf width - 3-6 adjustable closer strength 	<ul style="list-style-type: none"> - Cover plate - Top pivot - Bottom strap - Offset pivot - Interchangeable spindle 5mm-35mm 	<ul style="list-style-type: none"> - 10 year mechanical - For finish warranties, please refer to allegion.co.nz/finisheswarranty

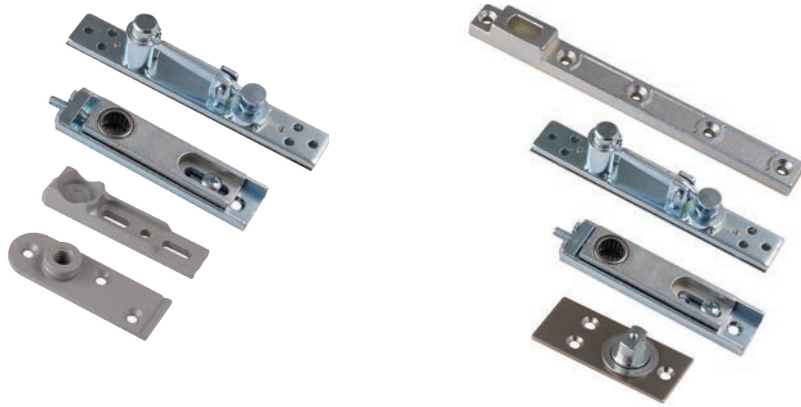
Briton 2800 concealed transom closers



● Aluminium

Technical specifications	Functions	Accessories	Warranty
<ul style="list-style-type: none"> - Adjustable spring strength to suit door size - Adjustable closing and latch speed - Optional 90° and 105° hold open - Side load arm standard, optional end load arm - Max door weight 80kg <p>Door type</p> <ul style="list-style-type: none"> - Timber or metal doors <p>Closer strength</p> <ul style="list-style-type: none"> - 2-4 adjustable <p>Door size</p> <ul style="list-style-type: none"> - 1100mm maximum width 	<ul style="list-style-type: none"> - Non hold open - Hold open 90° - Hold open 105° 	<ul style="list-style-type: none"> - Cover plate - Bottom pivot - End load arm - Heavy duty pivot - Metal fire box 	<ul style="list-style-type: none"> - 10 year mechanical - For finish warranties, please refer to allegion.co.nz/finisheswarranty

Briton pivot sets



2800

7500

● Satin Stainless Steel

Technical specifications

- Adjustable top pivot set
- Stainless steel cover plate for top pivot
- Needle roller bearing for top pivot
- Height adjustable bottom strap

Door type
- Timber or metal

Accessories
- Fixings for timber and steel

Model

2800
- Up to 1100mm door size
- 40mm door thickness
- 80kg maximum door weight

7500
- Up to 1400mm door size
- 250kg maximum door weight

Warranty

- 10 year mechanical
- For finish warranties, please refer to allegion.co.nz/finisheswarranty

Ives flush bolts



Ives FB41T
(Top)



Ives FB41B
(Bottom)

● Satin Chrome Plate

Technical specifications

- Bolt: 19mm throw with 22mm vertical adjustment
- Body size: 216mm (L) x 25mm (W) x 52mm (D)

Door type

- Timber

Material

- Steel plate
- Cast brass

Warranty

- 10 year mechanical
- For finish warranties, please refer to allegion.co.nz/finisheswarranty

Ives door coordinators



COR32



COR7G



Fire rated

● Aluminium

● Satin Chrome Plate

Technical specifications

- COR32 - 864mm-1320mm door opening
- COR42 - 1320mm-1830mm door opening
- COR52 - 1575mm-2340mm door opening
- COR7G and COR9G - up to 101mm (active door) and 1016mm (with astragal on inactive door), or up to 864mm (astragal on both doors)

Door type

- Timber or metal

Material

- Aluminium
- Forged brass

Warranty

- 10 year mechanical
- For finish warranties, please refer to allegion.co.nz/finisheswarranty

Briton door selectors



● Satin Stainless Steel

Technical specifications

- B3000/180 for pairs of doors up to 1800mm
- B3000/230 for pairs of doors up to 2400mm
- B4000/305 for doors fitted with exit hardware

Door type

- Timber or metal

Material

- Stainless steel

Warranty

- 10 year mechanical
- For finish warranties, please refer to allegion.co.nz/finisheswarranty





Exit devices

Briton 370 Series



B378E Reversible rim panic latch

● Silver



Technical specifications

- Single door applications
- Tested to 600,000 cycles
- Reversible

Door type
- Timber or metal

Door size
- 665mm - 1300mm (W)

Stile width
- Minimum 78mm with 13mm rebates
- Minimum 90mm with 25mm rebates

Material

- Zinc die cast chassis
- Steel rods and crossbars

Warranty

- 10 year mechanical
- For finish warranties, please refer to allegion.co.nz/finisheswarranty



B376E Vertical panic bolt

● Silver

Technical specifications

- Single door applications or used with 377E double door set for double rebated door applications

Door type
- Timber or metal

Door size
- 665mm - 1300mm (W)
- Extra long shoot for door heights up to 3350mm

Stile width
- Minimum 78mm with 13mm rebates
- Minimum 90mm with 25mm rebates

Material

- Zinc die cast chassis
- Steel rods and crossbars

Warranty

- 10 year mechanical
- For finish warranties, please refer to allegion.co.nz/finisheswarranty

Von Duprin 22 Series



Rim device
(VD22EO)



Vertical rod device
(VD2227EO)

● Aluminium



Fire rated

Technical specifications

- Single and double door applications
- Reversible handing
- Surface mounting
- Available in two lengths: 914mm and 1220mm

Door type

- Aluminium
- Timber
- Metal

Door thickness

- Surface mounted: 19mm minimum
- Through bolt: 44mm to 57mm

Door width

- 914mm-673mm minimum*
- Up to 2314mm for vertical rod device (3050mm high when fitted with extension rods)

Stile width

- VD22 minimum 111mm with optional 1609 strike
- VD2227 minimum 92mm

*Based on standard strike and 13mm stop

Accessories

- Alarm kit
- Knob
- Lever
- Nightlatch
- Thumbpiece
- Vertical extension rods
- Hex dogging key

Warranty

- 10 year mechanical
- For finish warranties, please refer to allegion.co.nz/finisheswarranty

Von Duprin 33A Series



VD33EO

 Satin Chrome Plate



Technical specifications

- Single and double door applications
- Non-handed
- Push pad exit device
- VD3327A-EO – exit only surface mounted vertical rod device (suitable for standard door height 2134mm)

Door type

- Timber
- Metal

Door thickness

- Surface mounted: 19mm minimum
- Through bolt: 44mm–57mm

Door width

- 711mm–914mm

Stile width

- Double rebated door: 76mm minimum with optional 1609 strike
- Double non-rebated door: 44mm minimum

Accessories

- Exit alarm kit
- Electric latch retraction
- Nightlatch
- Lever
- Vertical extension rods
- Hex dogging key
- Universal strikes

Warranty

- 10 year mechanical
- For finish warranties, please refer to allegion.co.nz/finisheswarranty

Von Duprin 88 Series



VD88EO

 Satin Chrome Plate



Technical specifications

- Single and double door applications
- Reversible handing
- Push bar exit device

Door type

- All door types

Door thickness

- Surface mounted: 19mm minimum
- Through bolt: 44mm–57mm

Door width

- 600mm minimum

Stile width

- VD88EO: 111mm minimum with standard 299 strike; 100mm minimum with optional 1606 strike
- VD8827EO: 71mm minimum on single door; 64mm min on double non-rebated doorset

Accessories

- Vertical extension rods
- Hex dogging key
- Universal strikes
- Vertical extension rods

Warranty

- 10 year mechanical
- For finish warranties, please refer to our website allegion.co.nz/finisheswarranty

Von Duprin 99 Series



VD99EO

 Satin Chrome Plate

Technical specifications

- Single and double door applications
- Reversible handing
- Push pad exit device

Door type

- Aluminium, hollow metal or timber hinged doors

Door thickness

- Surface mounted: 19mm minimum
- Through bolt: 44mm–57mm

Door width

- 711mm minimum*

Stile width

- VD99EO: 111mm minimum with standard 299 strike
- VD9927EO: 94mm minimum

Models

- VD99EO: exit only rim device
- VD99EO-F: exit only fire rated rim device
- VD9927EO: exit only surface mounted vertical rod device
- VD9927EO-F: exit only fire rated surface mounted vertical rod device (suitable for standard door height 2134mm)

Accessories

- Exit alarm kit
- Quiet electric latch retraction
- Nightlatch with pull
- Breakaway lever
- Vertical extension rods
- Hex dogging key
- Universal strikes

Warranty

- 10 year mechanical
- For finish warranties, please refer to allegion.co.nz/finisheswarranty

*Based on standard strike and 13mm stop height





General
hardware

Schlage door stops



12821



19022



19025



19028
19027
19029



19030



13001



13002



19035
19036

Model	Fixing	Finishes	Size
12821	Floor	<input type="radio"/> Satin Chrome Plate <input type="radio"/> Satin Pearl <input type="radio"/> Satin Stainless Steel	45mm diameter, 75mm projection
19022	Floor	<input type="radio"/> Satin Chrome Plate <input type="radio"/> Satin Pearl <input type="radio"/> Satin Stainless Steel	50mm diameter, 38mm projection
19025	Floor	<input type="radio"/> Satin Chrome Plate <input type="radio"/> Satin Pearl <input type="radio"/> Satin Stainless Steel	45mm diameter, 60mm projection
19028	Floor	<input checked="" type="radio"/> Matt Black <input type="radio"/> Satin Chrome Plate <input type="radio"/> Satin Pearl <input type="radio"/> Satin Stainless Steel	45mm diameter
19027	Floor	<input type="radio"/> Satin Chrome Plate <input type="radio"/> Satin Pearl <input type="radio"/> Satin Stainless Steel	45mm diameter
19029	Floor	<input type="radio"/> Satin Chrome Plate <input type="radio"/> Satin Pearl <input type="radio"/> Satin Stainless Steel	45mm diameter
19030	Floor	<input type="radio"/> Satin Chrome Plate <input type="radio"/> Satin Pearl <input type="radio"/> Satin Stainless Steel	40mm height, 40mm width
19305	Floor	<input type="radio"/> Satin Chrome Plate <input checked="" type="radio"/> Matt Black <input type="radio"/> Satin Pearl <input type="radio"/> Satin Stainless Steel	75mm projection
13001	Wall	<input type="radio"/> Satin Chrome Plate <input type="radio"/> Satin Pearl <input type="radio"/> Satin Stainless Steel	80mm projection; 50mm diameter
13002	Wall	<input type="radio"/> Satin Chrome Plate <input type="radio"/> Satin Pearl <input type="radio"/> Satin Stainless Steel	75mm projection

Legge latchbacks



WMLB-4



FMLB-6



FMLB-10

Satin Chrome Plate

Model	Fixing	Size	Warranty
WMLB-4	Wall	100mm	- 10 year mechanical
FMLB-6	Floor	100mm	- For finish warranties, please refer to allegion.co.nz/finisheswarranty
FMLB-10	Floor	175mm	

Legge pull handles and push plates



401



406



601



606



1351



1353

Antique Bronze
 Oil Rubbed Bronze
 Polished Stainless Steel (on special request)
 Satin Black Chrome
 Satin Stainless Steel

Model	Description	Dimensions	Fixing	Warranty
401	Pull handle	300mm x 65mm plate 150mm x 16mm pull	Visible or concealed	- 10 year mechanical - For finish warranties, please refer to allegion.co.nz/finisheswarranty
406	Push plate	300mm x 65mm plate 200mm x 16mm pull	Visible or concealed	
601	Pull handle	300mm x 100mm plate	Visible or concealed	
606	Push plate	300mm x 100mm 200mm x 16mm pull	Visible (606-V) Concealed (606-C) Concealed (606-C-to suit 401 pull)	
1351	Pull handle (also available without rose)	150mm x 16mm pull 200mm x 16mm pull with rose		
1353	Offset pull handle on 38mm rose	200mm x 16mm		

Legge flush pulls



1962



1964

Satin Stainless Steel

Model	Dimensions	Warranty
1962	100mm (L) x 50mm (W) x 19mm (D)	- 10 year mechanical - For finish warranties, please refer to allegion.co.nz/finisheswarranty
1964-01	120mm (L) x 35mm (W) x 12.5mm (D)	

Legge heavy duty roller catch



● Satin Stainless Steel



Fire rated

Technical specifications

- 304 grade stainless steel components
- Adjustable for different door clearances

Warranty

- 10 year mechanical
- For finish warranties, please refer to allegion.co.nz/finisheswarranty

Schlage signage and coat hook



16241



16251



16261



16281



16291



16271



12921

● Satin Stainless Steel

Model	Description	Dimensions
16241	Male symbol	110mm (H) x 120mm (W)
16251	Female symbol	110mm (H) x 120mm (W)
16261	Disabled symbol	110mm (H) x 120mm (W)
16281	Shower symbol	110mm (H) x 120mm (W)
16291	Baby change symbol	110mm (H) x 120mm (W)
16271	Unisex symbol	110mm (H) x 120mm (W)
12921	Hat and coat hook	80mm (L) x 20mm (W)

Legge indicator bolt



1461

● Satin Chrome Plate

Technical specifications

- Suitable for timber and metal doors
- Clear indication of availability of a room
- External release slotted button permits access under emergency conditions
- Zinc die cast material

Description

- Indicator bolt or surface mounted bolt (without the indicator)

Warranty

- 10 year mechanical
- For finish warranties, please refer to allegion.co.nz/finisheswarranty

Legge grab rails



LGR610S



LGR305-45S



LGR750-90S



● Satin Stainless Steel

Technical specifications

- 304 grade stainless steel
- Peened grip finish
- Three versions, straight, 45° and 90°
- Disability code compliant
- Satin stainless steel fixings included

Model

- LGR610S**
- Grab rail – straight
- 610mm length
- LGR305-45S**
- Grab rail – 45
- 305mm x 305mm
- LGR750-90S**
- Grab rail – 90°
- 750mm x 750mm

Warranty

- 10 year mechanical
- For finish warranties, please refer to allegion.co.nz/finisheswarranty

Legge architectural hinges



13221



13222



13225

● Satin Stainless Steel

Model

- 13221-01
13221-03
13222-02
13222-04
13225

Description

- Broad butt, loose pin hinge
Broad butt, loose pin hinge
Broad butt ball bearing hinge, fixed pin
Broad butt ball bearing hinge, fixed pin
Fast fix ball bearing hinge, fixed pin

Dimensions

- 100mm x 75mm
100mm x 100mm
100mm x 75mm
100mm x 100mm
100mm x 68mm

Schlage door viewer



DV004

● Antique Bronze

● Satin Black Chrome

● Satin Brass

● Satin Chrome Plate



Fire rated

Technical specification

- 180 degree view angle
- Brass material

Warranty

- 10 year mechanical
- For finish warranties, please refer to allegion.co.nz/finisheswarranty

Legge bolts - barrel, chain, and



1851



1791



LG12SB



Fire rated



LG12NSB



1913

○ Satin Chrome Plate

● Satin Stainless Steel (chain bolt only)

Model	Description	Size	Warranty
1851	Chain bolt 100mm	600mm chain length	- 10 year mechanical - For finish warranties, please refer to allegion.co.nz/finisheswarranty
LG12SB	Socket bolt	150mm (L), Ø12mm	
LG12NSB	Necked socket bolt	150mm (L), Ø12mm	
1912	Flush bolt	150mm (L), 25mm (W)	
4012	Flush bolt	400mm (L), 25mm (W)	
6012	Flush bolt	600mm (L), 25mm (W)	
8012	Flush bolt	800mm (L), 25mm (W)	
1913	Dust socket	43mm (D), suits Ø12mm bolt	

Legge flush bolts



1912



4012



6012



8012

● Satin Chrome Plate

Common terms

Backset

The distance from the edge of the door to the centre of the hole for the spindle/lever.

Classroom lock

Outside handle locked and unlocked by key. Inside handle always unlocked

Door preparation

The cut-outs or holes made to the door for the lock and/or lever being installed.

Door thickness

The measurement from outside face of the door to inside face of the door. All locks have a minimum/maximum door thickness.

Double cylinder deadbolt

Deadbolt thrown or retracted by the key from either side. Bolt automatically deadlocks when fully thrown.

Double cylinder deadlatch

Deadlocking latchbolt retracted by the key from either side. No hold-back feature

Mortice lock

A lock which is set within the body of a door in a recess or mortice, as opposed to one attached to the door surface.

Nightlatch

Deadlocking latchbolt retracted by the key from outside or by inside turn. Rotating turn and activating hold-back feature keeps latch retracted.

Single cylinder and turn deadbolt

Deadbolt thrown or retracted by the key from outside or by inside turn. Bolt automatically deadlocks when fully thrown.

Stile

The vertical edge of the door where door furniture is fixed. A thin stile, i.e. one with a glass pane near the edge of the door may have implications for which backset can be used.

Storeroom lock

Outside handle fixed. Entrance by key only. Inside handle always unlocked.

Technical compliance



Fire Rating:

Product has been tested for use in fire doors. Refer to fire door manufacturer for approval.



Accessibility:

Compliant to the AS 1428:1-2009 Design for Access and Mobility.

Caution: When door closers are installed and adjusted to meet reduced opening force requirements, there may be insufficient power to reliably close and latch the door, depending on prevailing operating conditions.

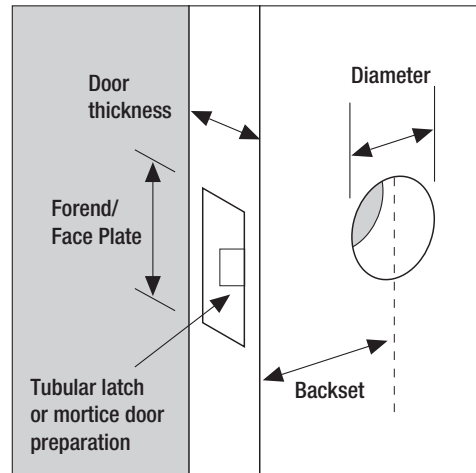


Electromagnetic compatibility:

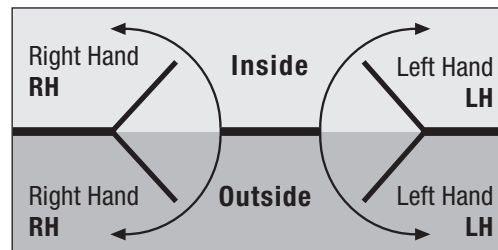
Meets EN 61000-6-1 (emission) EN 61000-6-2 (immunity) standards.

Lever handing and general information

Door preparation guide

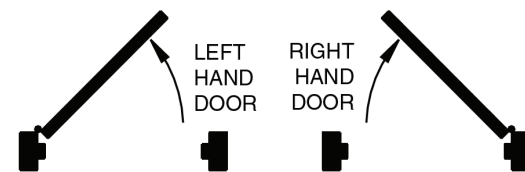


Lever handing guide

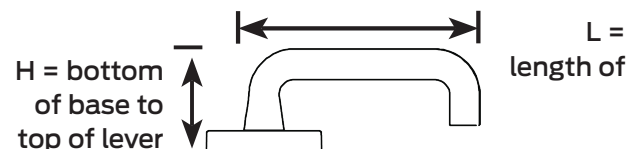


USA lever handing guide

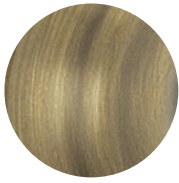
When ordering LCN handed closers, use this chart



Lever dimension guide

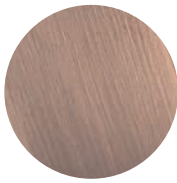


Finish glossary



AB

Antique Brass



ABC

Aged Brushed
Copper



ABZ

Antique Bronze



B/MB

Black/Matt
Black



CP

Chrome Plate



ORB

Oil Rubbed
Bronze



PB/BG

Polished Brass/
Bright Gold



PS

Polished Steel



SBC

Satin Black
Chrome



SCP/BSC

Satin Chrome
Plate/Brushed
Satin Chrome



SNP

Satin Nickel
Plate



SP

Satin Pearl



SSS

Satin Stainless
Steel

Note: Colours are indicative only and subject to limitations in the printing process

Services

Scheduling

A comprehensive door schedule specification service is provided. Door hardware schedules are available with no obligation.

Master keying

Master Keying is a method of controlling access through a building. A key schedule is prepared from provided floor plans. It includes a key matrix, which locates keys and locks and their distribution and usability. Security is based on a system where one lock has its own key. This key will not operate any other locks in the property/building, however where all locks are in the same property/building the locks can be operated by the one master key.

Keyed Alike – KA

More than one lock being operated by the same key.

Keyed to Differ – KD

One lock is opened with a single key.

Product application classification

Residential and light duty

Moderate use. Typical applications include residential homes, apartments, and low traffic offices.

Commercial

Moderate to high traffic flow. Typical applications include classrooms, storerooms, entrance/fire applications.

Heavy duty

Excessive high usage/high security subject to abuse. Typical applications include prisons, stairwell doors, and air pressure differential.



Luxury at every turn

Highly favoured for architecturally designed homes and commercial projects, Legge's Luxe. portfolio includes a total of 7 luxurious finishes with a range of 11 lever and 7 plate designs.

The New Zealand designed and assembled Legge Luxe. collection is the perfect touch of luxury at every turn.



Designed &
Assembled



Polished Brass



Satin Brass



Antique Bronze



Oil Rubbed Bronze



Chrome



Satin Chrome



Satin Black Chrome

allegion.com.au/luxe
allegion.co.nz/luxe

Luxe.
Legge Finishes Portfolio



About Allegion™

Allegion (NYSE: ALLE) is a global pioneer in seamless access, with leading brands like CISA®, Interflex®, LCN®, Schlage®, SimonsVoss® and Von Duprin®. Focusing on security around the door and adjacent areas, Allegion secures people and assets with a range of solutions for homes, businesses, schools and institutions. Allegion had \$2.7 billion in revenue in 2020, and its security products are sold around the world.

For more, visit www.allegion.com

A passion for excellence

Briton ■ LCN ■ **LEGGE** ■ **SCHLAGE** ■ VON DUPRIN

Due to continuous product development, some products may vary from that shown. The Allegion guarantee, shown on the pages within, applies only when properly installed and subjected to no more than fair wear and tear. This guarantee does not extend to labour costs, personal loss, death or injury or economic, consequential or property damage of any kind whatsoever. Due to the nature of the printing process, colours may vary from those shown in this brochure.

Allegion New Zealand

Freephone 0800 477 869
Freefax 0800 477 868
Email nzinfo@allegion.com
www.allegion.co.nz

Allegion Australia

Freephone 1800 098 094
Freefax 1800 098 095
Email info.au@allegion.com
www.allegion.com.au

NZCOM0821
© 2021 Allegion

