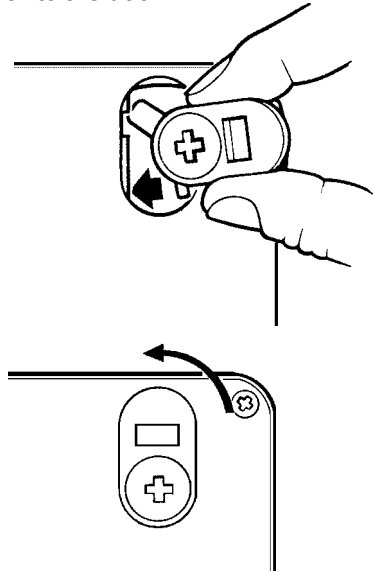


FITTING INSTRUCTIONS FOR No. 7A CAM (FOR FUNCTIONS WITH A TURN)

IMPORTANT: This must be done before fitting the lock to the door.

- 1 Remove cylinder retaining screw.
- 2 Take the no. 7a cam between thumb and finger as shown (with the large central tongue held fully up) and insert sideways into cam seating.
- 3 Turn the cam 90° to drop into seating.
- 4 Insert cylinder retaining screw to secure in place.



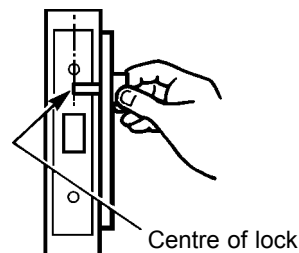
MORTICE INSTRUCTIONS

- 1 Cut mortice slot using template overleaf for correct size.
- 2 Fit lock into mortice, scribe around forend and remove wood to allow flush fit to door.
- 3 Remove lock and use template overleaf to mark and drill holes to suit lock function.

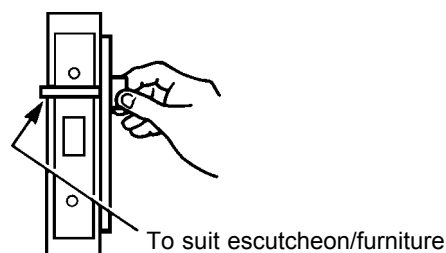
CAUTION: do not drill holes right through the door. The escutcheon/furniture may not cover any holes that are incorrectly drilled.

FITTING OF TURN - CUT AS PER DIAGRAM

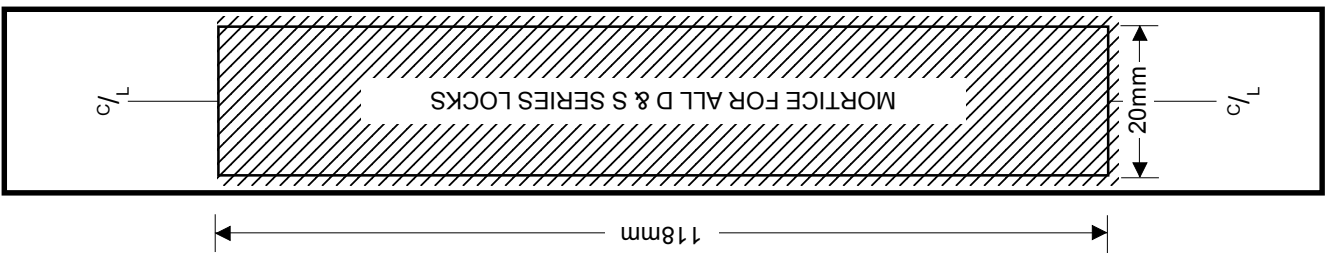
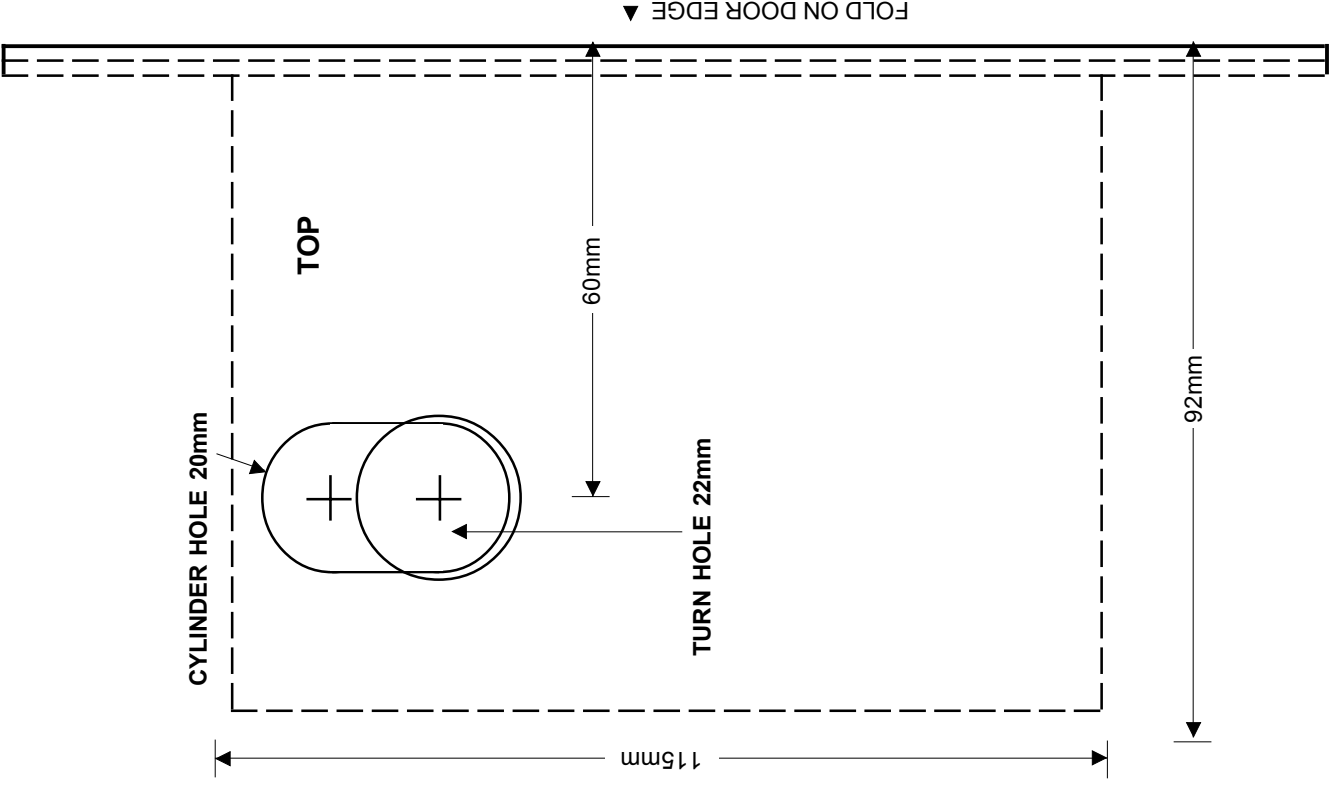
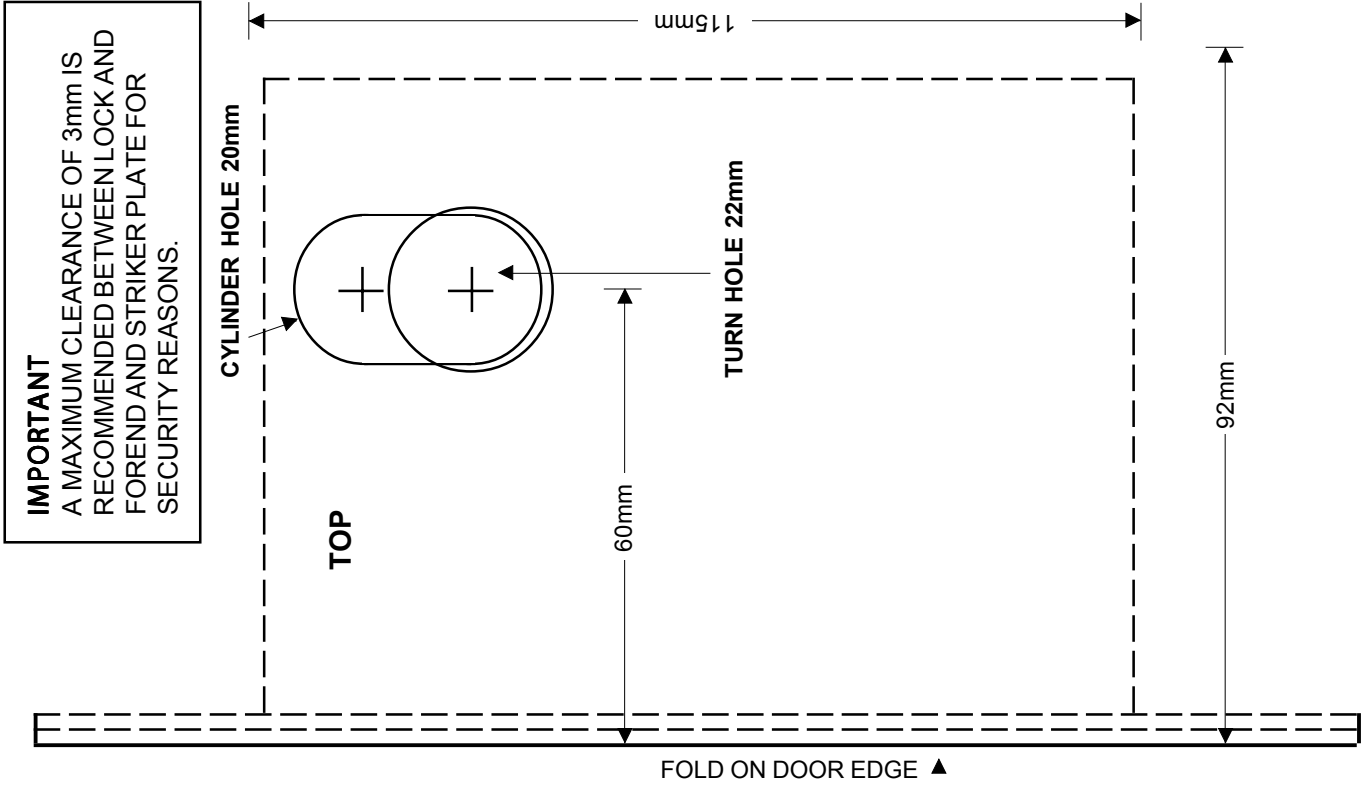
Turn with Emergency Release



All functions except Emergency Release



TEMPLATE 990 MORTICE LOCK - D & S SERIES



DEPTH OF MORTICE 92mm