

# A **first impression** that lasts



Stand out effortlessly with the Schlage range of entrance door hardware.

Our Schlage door hardware offers a simple selection process, enhances the style of your home, keeps it safe and even makes it smarter.

**Protect** what matters most.



Cover Image Credit: Dennis Radermacher - Lightforge



Credit: Dennis Radermacher - Lightforge

#### A FIRST IMPRESSION THAT LASTS

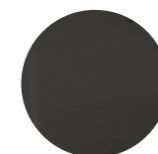
Trusted to secure and decorate millions of homes around the world, Schlage creates stylish, innovative door hardware solutions. Ranging from a traditional mechanical statement to a smarter connected solution, Schlage protects what matters most.

#### FINISH YOUR HOME IN STYLE

Schlage offers a variety of finishes to complement both the front door itself and the overall style of the home, allowing homeowners to freely express their individuality.



SATIN BLACK CHROME  
SBC



BLACK/MATTE BLACK  
B/MB



SATIN CHROME  
SCP



SATIN NICKEL  
SNP



SATIN STAINLESS STEEL  
SSS



SILVER  
SE



## Electronic

### **STRIKING AND VERSATILE, BRIDGING MODERN STYLES WITH SMART TECHNOLOGY**

Schlage connected smart locks combine innovative technology with modern sleek designs, providing your home with the convenience of keyless simplicity. Pair your Schlage electronic lock with our stylish range of grand pull handles and entrance sets for a smarter and bolder first impression.

# Schlage Encode™

## MAKING HOMES SMARTER

The revolutionary Schlage Encode™ Smart Wi-Fi Deadbolt connects directly to your home Wi-Fi. There's no need to purchase an extra accessory or hub to control your lock from anywhere, making it easy and intuitive to use.

Simply pair your lock with the Schlage Home app on your smartphone to lock and unlock your door from anywhere. You specify who has access and when by setting up to 100 codes, or send virtual keys to trusted friends, family or guests via text or email. Receive notifications when your lock has been accessed.

Total control and peace of mind at your fingertips.



**ENCODE (SNP)**  
SRE60121



**ENCODE (BLACK)**  
SRE60120

### FEATURES

- Graded best in Security, Durability and Finish (BHMA Grading System)
- Built in Wi-Fi for remote access and control
- Fingerprint resistant illuminated touch screen
- Built-in alarm
- Auto locking
- Low battery notifications
- Schlage C5 cylinder
- 4 x AA alkaline batteries included
- 2.4 GHz Wi-Fi technology

### ACCESS

- Access by PIN, Schlage Home app, key, or virtual assistants
- 100 PIN code capacity
- User codes can be set up as permanent, temporary or recurring access
- Works with Amazon Alexa and Google Assistant

### DOOR SPECIFICATIONS

- 54mm hole preparation - easy to retrofit
- 60mm or 70mm backset (adjustable)
- 35mm to 46mm door thickness
- Extension kit available for 47mm to 64mm

### WARRANTY

- 3 years electronic warranty
- Limited lifetime mechanical warranty



Schlage Encode ● B ● SNP



# Schlage Artus

## NARROW PROFILE SMART LOCK

Introducing the sleek Schlage Artus Smart Lock, designed with versatility to suit various door profiles. The Schlage Artus is the perfect blend of advanced technology with a modern design, offering you the ultimate security and convenience for your home.

The Schlage Artus seamlessly integrates with the Schlage Breeze app, to easily manage and monitor your lock. Retrofit from an existing mechanical solution for a seamless digital solution.

Say goodbye to lost keys and forgotten combinations!



**ARTUS SMART ENTRY LEVER SET (SNP)**

Furniture only: SREARTSNP  
30mm: SREART30SNP\* 40mm: SREART40SNP\* 60mm: SREART60SNP\*



**ARTUS SMART ENTRY LEVER SET (BLACK)**

Furniture only: SREARTMB  
30mm: SREART30MB\* 40mm: SREART40MB\* 60mm: SREART60MB\*

### FEATURES

- Weather resistant (tested to IP66)
- Made from 304 grade Stainless Steel
- Disability compliant lever
- Backlit touch screen
- Built-in alarm
- Auto locking and passage mode
- Low battery notifications
- Random PIN number function protects your entry code
- 4 x AA alkaline batteries included

### ACCESS

- Access by PIN, Schlage Breeze app, key, or virtual assistants
- Up to 150 PIN code and 200 key tag capacity
- User codes can be set up as permanent, temporary or recurring access
- Remote access available with Schlage Wi-Fi Bridge BZ100 (sold separately)
- Works with Amazon Alexa and Google Assistant

### DOOR SPECIFICATIONS

- 30mm, 40mm or 60mm backset options available
- 35mm to 60mm door thickness

### WARRANTY

- 2 years mechanical and electronic warranty



Schlage Artus Smart Entry Lever Set ● B ● SNP

\* Product codes include mortice lock



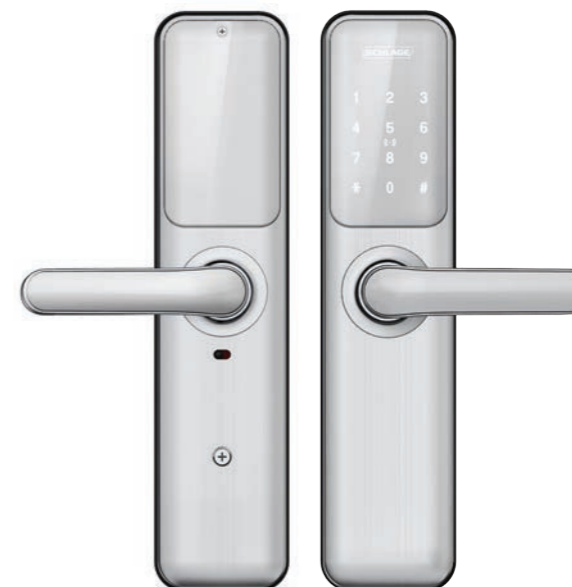
# Schlage Resolute

## SMART MORTICE LOCK

A smart lock with smart technology, the Schlage Resolute is sure to impress the neighbours! For keyless simplicity and peace of mind, the Schlage Resolute is easy to operate, features Bluetooth technology and advanced security options.

Its wide profile makes it perfect for retrofitting and modernising outdated hardware, for a seamless smart solution with mortice locking.

Simplify your life with Schlage Resolute and make keyless living a breeze!



RESOLUTE SMART MORTICE LOCK SET (SILVER)  
SRERES60SE\*



RESOLUTE SMART MORTICE LOCK SET (BLACK)  
SRERES60MB\*

### FEATURES

- Weather resistant (tested to IP66)
- Made from 304 grade Stainless Steel
- Backlit touch screen
- Built-in alarm
- Auto locking, passage mode and privacy toggle
- Low battery notifications
- Random PIN number function protects your entry code
- 4 x AA alkaline batteries included

### ACCESS

- Access by PIN, Schlage Breeze app, key, or virtual assistants
- Up to 150 PIN code and 200 key tag capacity
- User codes can be set up as permanent, temporary or recurring access
- Remote access available with Schlage Wi-Fi Bridge BZ100 (sold separately)
- Works with Amazon Alexa and Google Assistant

### DOOR SPECIFICATIONS

- 60mm backset (or 70mm retrofit options available)
- 35mm to 70mm door thickness

### WARRANTY

- 2 years mechanical and electronic warranty



Schlage Resolute Smart Mortice Lock Set ● B ● SE

\* Product codes include mortice lock

# Schlage Ease™

## STYLED FOR THE SMARTER FAMILY HOME

The Schlage Ease™ range offers a stylish lock packed with modern functions the whole family can enjoy.

Consider the sleek design of the Schlage Ease™ S1 Smart Deadbolt or the convenient Schlage Ease™ S2 Smart Entry Lock with built-in lever, providing you and your family convenience and security for safer living.

Simple to program storing up to 20 access codes. Pair your lock with the Schlage Abode app on your smartphone to unlock your door and provide access to friends and family at the touch of a button.

Go keyless, for a smarter way of living.



**EASE S1 SMART DEADBOLT**  
SREEAS1C5BL



**EASE S2 SMART ENTRY LOCK**  
SREEAS2C5BL

### FEATURES

- Backlit touch screen
- Built-in alarm
- Auto locking
- Low battery notifications
- Schlage C5 cylinder
- Can be keyed alike to other Schlage locksets
- 4 x AA alkaline batteries included

### ACCESS

- Access by PIN, Schlage Abode app, key, or virtual assistants
- 20 PIN code capacity
- User codes can be set up as permanent, temporary or recurring access
- Remote access available with Schlage Wi-Fi Bridge AB100 (sold separately)
- Works with Amazon Alexa and Google Assistant

### DOOR SPECIFICATIONS

- 54mm hole preparation - easy to retrofit
- 60mm or 70mm backset (adjustable)
- 33mm to 50mm door thickness


### WARRANTY

- 2 years mechanical and electronic warranty



Schlage Ease S1 Smart Deadbolt and S2 Smart Entry Lock ● B

## SCHLAGE ELECTRONIC SELECTOR CHART

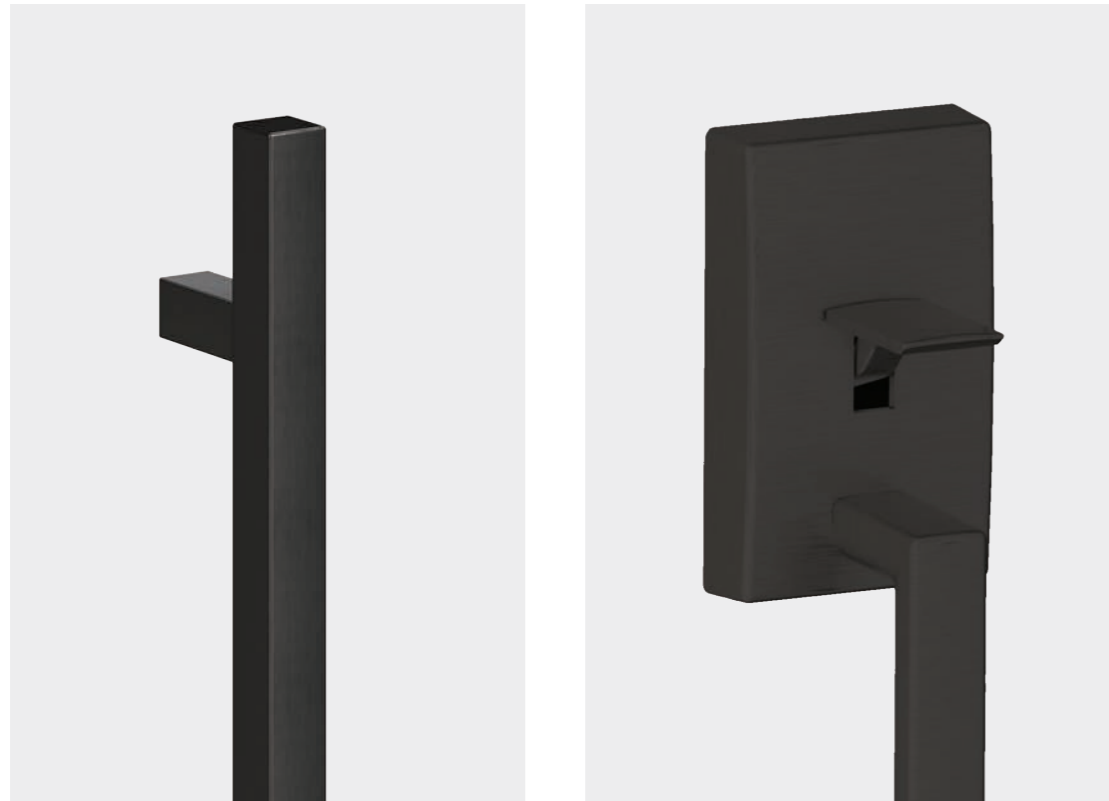
	Schlage Encode™	Schlage Artus Smart Entry Lever	Schlage Resolute Smart Mortice Lock	Schlage Ease™ S1 Deadbolt	Schlage Ease™ S2 Entry Lock
Key benefit	 Use Schlage Home for easy setup and control with iOS and Android smartphones	 Use Schlage Breeze for easy setup and control with iOS and Android smartphones Contains built-in lever	 Use Schlage Breeze for easy setup and control with iOS and Android smartphones Contains built-in lever	 Use Schlage Abode for easy setup and control with iOS and Android smartphones	 Use Schlage Abode for easy setup and control with iOS and Android smartphones Contains built-in lever
Sharing access	Use Schlage Home app to manage access codes and share virtual keys	Use Schlage Breeze app to manage access codes and share virtual keys	Use Schlage Breeze app to manage access codes and share virtual keys	Use Schlage Abode app to manage access codes and share virtual keys	Use Schlage Abode app to manage access codes and share virtual keys
Remote access	Built-in Wi-Fi provides remote access – no additional accessories required	Remote access with the Schlage Wi-Fi Bridge (BZ100)	Remote access with the Schlage Wi-Fi Bridge (BZ100)	Remote access with the Schlage Wi-Fi Bridge (AB100)	Remote access with the Schlage Wi-Fi Bridge (AB100)
Voice assistants	Amazon Alexa Google Assistant	Amazon Alexa Google Assistant	Amazon Alexa Google Assistant	Amazon Alexa Google Assistant	Amazon Alexa Google Assistant
Access codes	100	Keypad: 150 Key tag: Up to 200	Keypad: 150 Key tag: Up to 200	20	20
Advanced security	Built-in alarm	Built-in alarm Random PIN number protection	Built-in alarm Random PIN number protection	Built-in alarm Random PIN number protection	Built-in alarm Random PIN number protection
Auto locking	Yes	Yes	Yes	Yes	Yes
Durability	Graded best in Security, Durability and Finish (BHMA Grading System)	IP66 rain and dust resistant	IP66 rain and dust resistant	IP54 rain and dust resistant	IP54 rain and dust resistant
Available finishes	Satin Nickel Plate and Black	Satin Nickel Plate and Black	Silver and Black	Black	Black
Warranty*					
- Mechanical	Limited lifetime	2 years	2 years	2 years	2 years
- Electronic	3 years	2 years	2 years	2 years	2 years



\* For the finish warranty, refer to our website [allegion.co.nz/finisheswarranty](http://allegion.co.nz/finisheswarranty)



# Schlage Electronic Entrance Sets



## BLACK



**ANDOR ENCODE**  
Turn: SRS61-625SBC  
Roller: SRS61-625RSBC

**TRENTO ENCODE**  
Turn: SRS64-620SBC  
Roller: SRS64-620RSBC

**TURIN ENCODE**  
Turn: SRS63-600SBC  
Roller: SRS63-600RSBC

**CORFU ENCODE**  
Turn: SRS67-600SBC  
Roller: SRS67-600RSBC



**OBLONG ENCODE**  
Turn: SRS60-600TMB

**OBLONG EASE**  
Turn: SRS61-600TMB

**CENTURY/LATITUDE ENCODE**  
SRS60MB

**ROLLER LATCH**  
If you prefer a minimalistic look, you can opt for the roller latch set (without turn). Roller latch is concealed in door frame.

Andor, Trento, Turin, Corfu pull handles and thumb turns ● SBC Oblong pull handle ● MB Schlage Encode, Schlage Ease, and Century/Latitude ● B



Smart deadbolt sets consist of Schlage Encode™ Smart Wi-Fi Deadbolt or Schlage Ease™ S1 Smart Deadbolt, pull handles, and thumb turn or roller latch (applicable sets only). **Satin Black Chrome** (Andor, Trento, Turin and Corfu) pull handles are made from 316L marine grade stainless steel with a high-quality electroplated finish; **Matte Black** (Oblong) pull handle is made from 304 stainless steel with a black powder coated finish, (Century/Latitude) is made from solid forged brass, with a black powder coated finish.

# Schlage Electronic Entrance Sets



## CLASSIC



**VERTA ENCODE**  
Turn: SRS69-800SSS  
Roller: SRS69-800RSSS

**ANDOR ENCODE**  
Turn: SRS61-625SSS  
Roller: SRS61-625RSSS

**TRENTO ENCODE**  
Turn: SRS64-620SSS  
Roller: SRS64-620RSSS

**TURIN ENCODE**  
Turn: SRS63-600SSS  
Roller: SRS63-600RSSS



**CORFU ENCODE**  
Turn: SRS67-600SSS  
Roller: SRS67-600RSSS

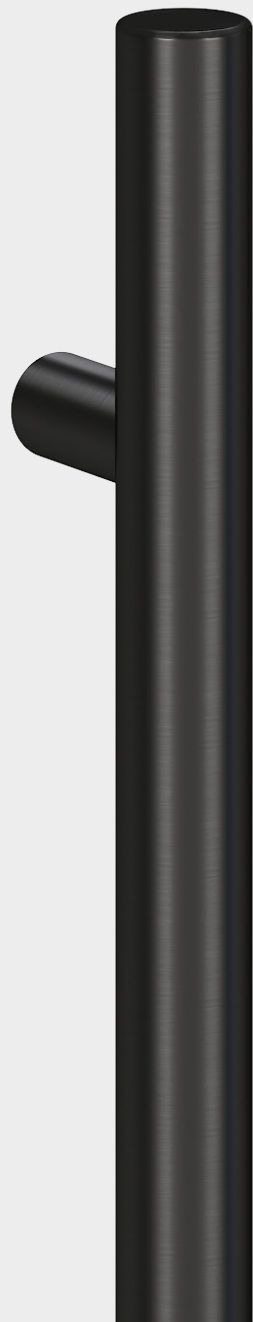
**CENTURY/ORBIT**  
SRS60SNP

**ROLLER LATCH**  
If you prefer a minimalistic look, you can opt for the roller latch set (without turn). Roller latch is concealed in door frame.

Pull handles and thumb turns ● SSS Schlage Encode and Century/Latitude ● SNP



Smart deadbolt sets consist of Schlage Encode™ Smart Wi-Fi Deadbolt, pull handles, and thumb turn or roller latch (applicable sets only). **Satin Stainless Steel** (Verta, Andor, Trento, Turin, Corfu and Oblong) pull handles are made from 316L marine grade stainless steel, **Satin Nickel Plate** (Century Latitude) is made from solid forged brass.



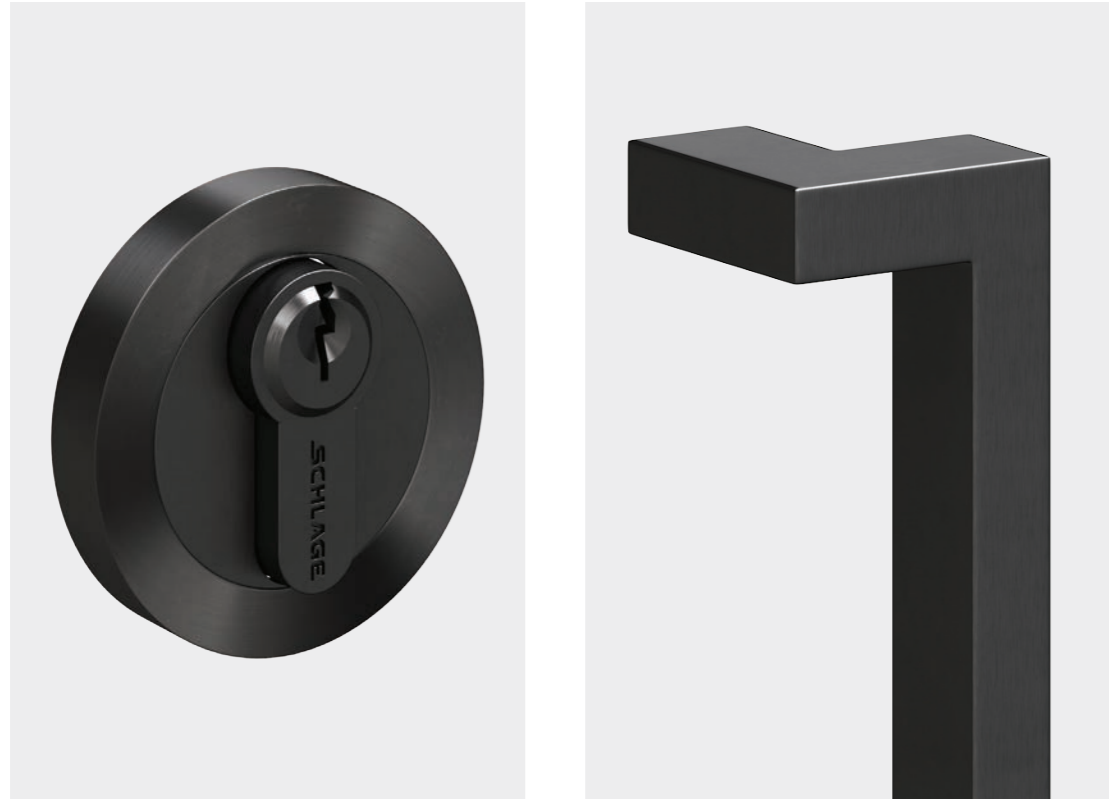
Credit: Dennis Radermacher - Lightforge

## Mechanical

### **SUBTLE LUSTRE IS EDGY AND ALLURING, BUT NEVER GRANDIOSE**

The timeless and graceful look of a mechanical entrance solution provides that European feel, blending form with function to complement the style of your home. The Schlage range of mechanical entrance solutions offers grand pull handle designs, elegant entrance sets, deadbolts and turns. Sophistication at your fingertips.

# Schlage Mechanical Entrance Sets



## BLACK



**ANDOR**  
SRS11-625SBC

**TRENTO**  
SRS14-620SBC

**TURIN**  
SRS13-600SBC

**CORFU**  
SRS17-600SBC



**OBLONG**  
SRS4-600TMB

**CENTURY/LATITUDE**  
Deadbolt: SRL45SMB  
Gripset: SRL32205

Andor, Trento, Turin, Corfu pull handles, thumb turns and escutcheons ● SBC Oblong pull handles and Century/Latitude ● MB

**Entrance sets\*** consist of pull handles, thumb turns, mortice lock and a single euro cylinder with escutcheons. \*Except the Oblong set which consists of a pull handle, thumb turn and a single cylinder deadbolt. **Satin Black Chrome** (Andor, Trento, Turin and Corfu) pull handles are made from 316L marine grade stainless steel with an electroplated finish; **Matte Black** (Oblong) pull handle is made from 304 stainless steel with a black powder coated finish, (Century/Latitude) entrance set is made from solid forged brass, with a black powder coated finish.

# Schlage Mechanical Entrance Sets



## CLASSIC



**VERTA**  
SRS19-800SSS

**ANDOR**  
SRS11-625SSS

**TRENTO**  
SRS14-620SSS

**TURIN**  
SRS13-600SSS



**CORFU**  
SRS17-600SSS

**CENTURY/ORBIT**  
SRL14214

**BOSTON**  
RBENTGSS

Pull handles, thumb turns and escutcheons ● SSS Century/Latitude and Boston entrance set ● SCP

**Entrance sets\*** consist of pull handles, thumb turns, mortise lock and a single euro cylinder with escutcheons. \*Except the Oblong set which consists of a pull handle, thumb turn and a single cylinder deadbolt. **Satin Stainless Steel** (Verta, Andor, Trento, Turin, Corfu and Oblong) pull handles are made from 316L marine grade stainless steel, **Satin Chrome Plate** (Century/Orbit and Boston) entrance set is made from solid forged brass.





# For more than a century, Schlage has helped protect what matters most – peace of mind.

Trusted in over 40 million homes, we strive to enhance everyday life by delivering door hardware and access control solutions focused on reliable experiences, modern simplicity, thoughtful innovation, and a dedication to craftsmanship. Where some see just a door, we see an opportunity to help turn a home into a haven.

**Trust** your home to Schlage.

ALLEGION (NEW ZEALAND) LIMITED

Freephone 0800 477 869  
Email [nzinfo@allegion.com](mailto:nzinfo@allegion.com)  
[www.allegion.co.nz](http://www.allegion.co.nz)

---

#### ABOUT ALLEGION™

Allegion (NYSE: ALLE) is a global pioneer in seamless access, with leading brands like CISA®, Interflex®, LCN®, Schlage®, SimonsVoss® and Von Duprin®. Focusing on security around the door and adjacent areas, Allegion secures people and assets with a range of solutions for homes, businesses, schools and institutions.

For more, visit [www.allegion.co.nz](http://www.allegion.co.nz)

Amazon, Alexa and all related logos are trademarks of Amazon.com, Inc. or its affiliates.  
Google is a trademark of Google LLC.



**ALLEGION™**