

## Application

Designed to suit aluminium folding screens, with all panels of equal width.

Panels can fold to one or both sides of the opening.

Pivot hardware enables folding exterior screen to be designed using equal width panels with no cutting down of the panel adjacent to post.

All stainless steel hardware components are located into the aluminium screen stile recess provided for flush and secure fitting.

## Door Specification

<b>Track System:</b>	<b>Screenfold 25</b>
Max Panel Height	2400mm
Max Panel Weight	25kg
Max Panel Width	900mm
Panel Thickness	19mm Security screen panels

## Hardware Specification

<b>Track:</b>	80A
Material	Aluminium Clear Anodised
Standard Lengths	2000mm, 3000mm, 4000mm and 6000mm

**Bracket (Face Fix):**  
Bracket 316 Stainless Steel 1SS/250  
A bracket is located close to the pivot with a bracket 300mm away to support the track where folding units stack. Place a bracket at the other end of the track, at each join in the track and space the other brackets at 900mm maximum centres.

**Hanger Sets:**  
End Hanger 53SSEN  
Intermediate Hanger 53SS/4EN  
Stainless Steel hangers are fitted with nylon tyre wheels on precision stainless steel ball race bearings. Vertical adjustment is simple and positive.

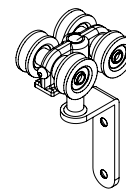
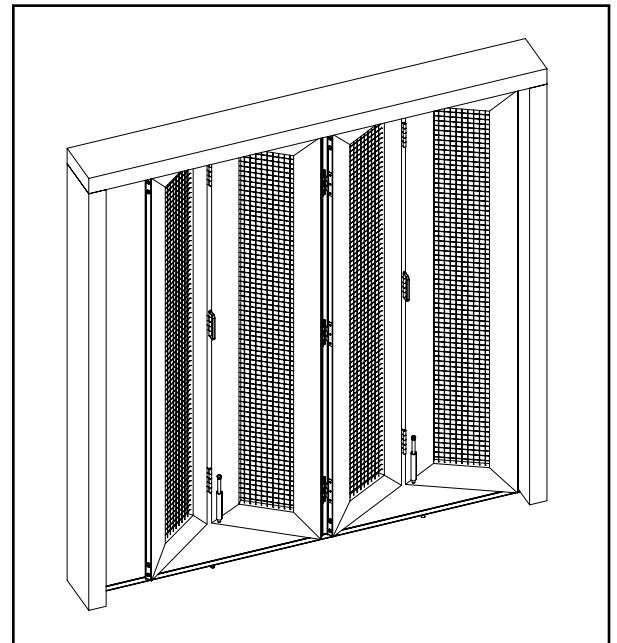
**Pivot Sets:**  
Adjustment Top & Bottom Pivot 21EPB

**Guide:**  
Corner Precision Stainless Bearing 113RB/94

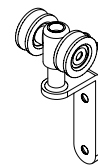
**Hinge Sets:**  
Screen Hinge 135SS  
Screen Hinge & Handle 136SS  
Screen hinges are constructed from 304 Satin Stainless Steel

**Channels:**  
Aluminium 94A  
Finish Aluminium - Mill or Clear Anodised  
Standard Lengths 2000mm, 3000mm, 4000mm and 6000mm

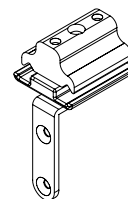
**Accessories:**  
Locking FFB85SS Barrel Bolt (bottom only)



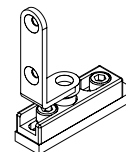
No. 53SS/4EN  
Intermediate Hanger



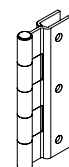
No. 53SSEN End Hanger



No. 113RB/94 End Guide



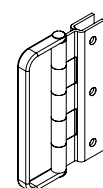
No. 21EPB Pivot



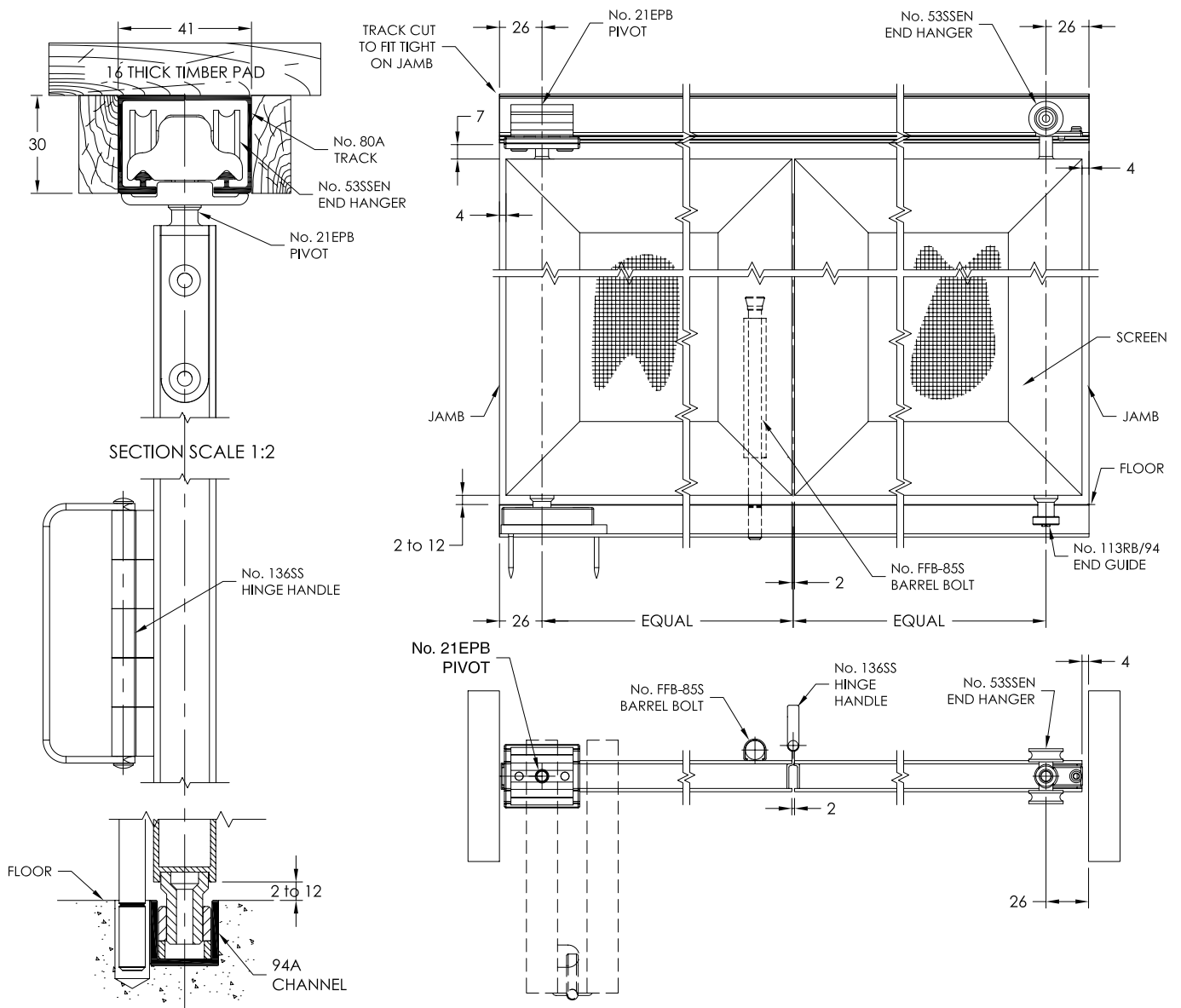
No. 135SS Hinge



No. FFB85SS Barrel Bolt



No. 136SS Hinge Handle



No.21EPB ADJUSTABLE PIVOT

